

LONDON, OHIO

AL-6621 (FAA)

# NDB RWY 9

LONDON/MADISON COUNTY (UYF)

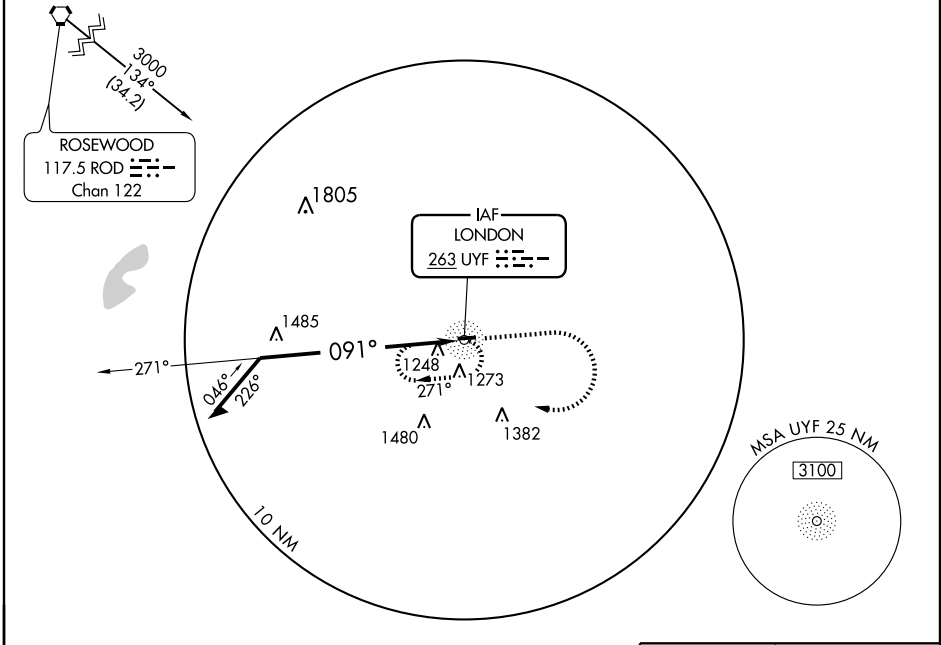
NDB UYF <b>263</b>	APP CRS <b>091°</b>	Rwy Idg <b>4001</b>
		TDZE <b>1082</b>
		Apt Elev <b>1082</b>

▼ Obtain local altimeter setting on CTAF; when not received, use Springfield altimeter setting.  
 ▲ NA Visibility reduction by helicopters NA.

MISSED APPROACH: Climb to 2900 then right turn direct UYF NDB and hold.

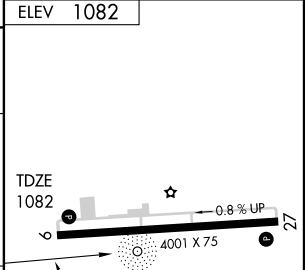
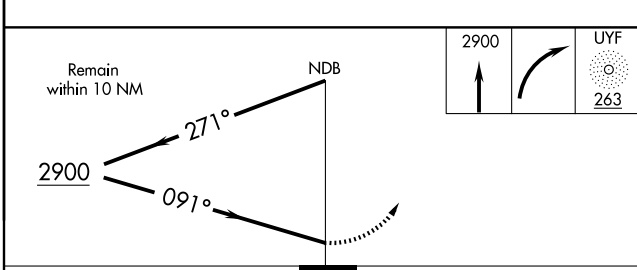
DAYTON APP CON  
**118.85 127.225 327.1**

UNICOM  
**123.0 (CTAF) 0**



EC-2, 22 OCT 2009 to 19 NOV 2009

EC-2, 22 OCT 2009 to 19 NOV 2009



CATEGORY	A	B	C	D
S-9	1900-1 818 (900-1)	1900-1¼ 818 (900-1¼)	1900-2½ 818 (900-2½)	1900-2¾ 818 (900-2¾)
CIRCLING	1900-1 818 (900-1)	1900-1¼ 818 (900-1¼)	1900-2½ 818 (900-2½)	1900-2¾ 818 (900-2¾)
SPRINGFIELD ALTIMETER SETTING MINIMUMS				
S-9	1940-1 858 (900-1)	1940-1¼ 858 (900-1¼)	1940-2½ 858 (900-2½)	1940-2¾ 858 (900-2¾)
CIRCLING	1940-1 858 (900-1)	1940-1¼ 858 (900-1¼)	1940-2½ 858 (900-2½)	1940-2¾ 858 (900-2¾)

LONDON, OHIO  
 Amdt 9 09183

39°56'N - 83°28'W

LONDON/MADISON COUNTY (UYF)

# NDB RWY 9