

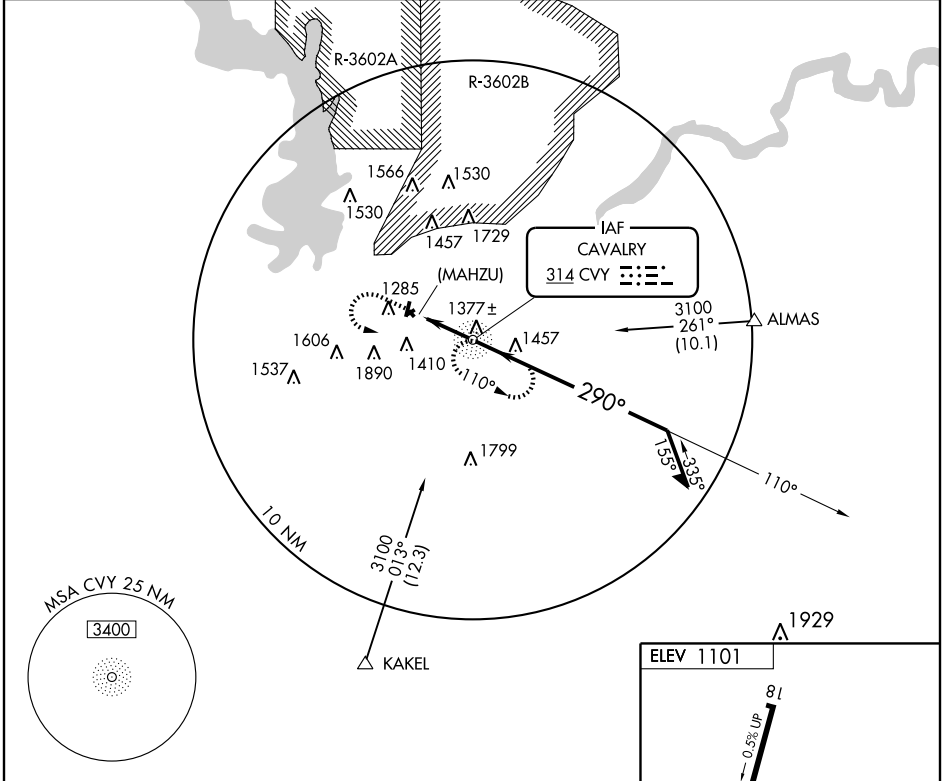
NDB or GPS-B

JUNCTION CITY/FREEMAN FIELD (3JC)

NDB CVY 314	APP CRS 290°	Rwy Idg TDZE Apt Elev	N/A N/A 1101
-----------------------	------------------------	-----------------------------	---

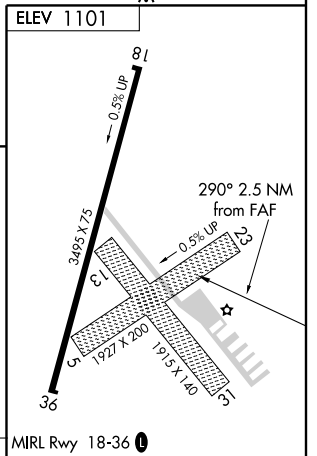
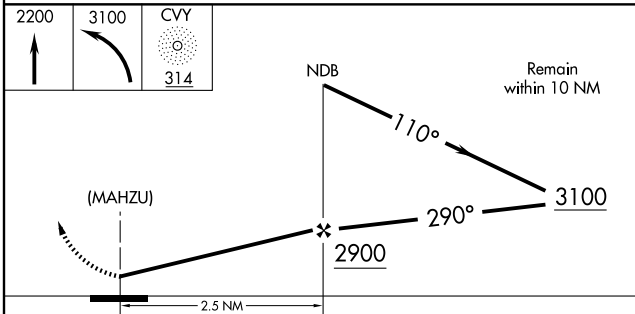
Use Marshall AAF, KS altimeter setting. NA	MISSED APPROACH: Climb to 2200 then climbing left turn to 3100 direct CVY NDB and hold.
---	---

MARSHALL AAF, KS ASOS 118.375	KANSAS CITY CENTER APP CON 127.35 257.975	UNICOM 122.8 (CTAF)
---	---	-------------------------------



NC-2, 22 OCT 2009 to 19 NOV 2009

NC-2, 22 OCT 2009 to 19 NOV 2009



CATEGORY	A	B	C	D	FAF to MAP 2.5 NM					
CIRCLING	2140-1¼ 1039 (1100-1¼)	2140-1½ 1039 (1100-1½)	NA		Knots	60	90	120	150	180
					Min:Sec	2:30	1:40	1:15	1:00	0:50