

ATCHISON, KANSAS

AL-6617 (FAA)

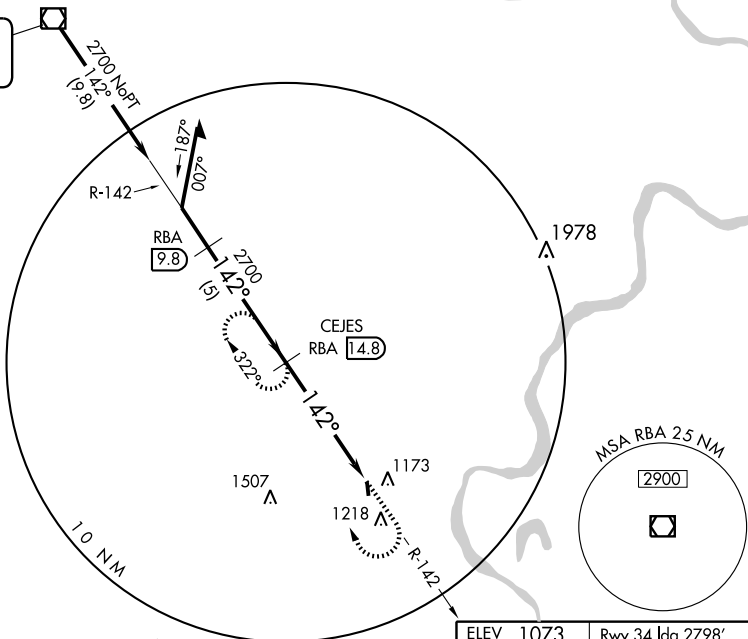
VOR/DME RBA 108.2 Chan 19	APP CRS 142°	Rwy ldg TDZE Apt Elev	3000 1073 1073
--	------------------------	-----------------------------	---

VOR/DME RWY 16

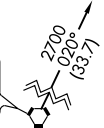
ATCHISON/AMELIA EARHART (K59)

<p>▲ NA Use Kansas City Intl altimeter setting.</p>		<p>MISSED APPROACH: Climb to 2000 then climbing right turn to 2700 via RBA R-142 to CEJES/RBA 14.8 DME and hold.</p>	
AWOS-3 123.675	ST. JOSEPH APP CON * 120.35 360.8	CLNC DEL 118.1	UNICOM 122.8 (CTAF) 0

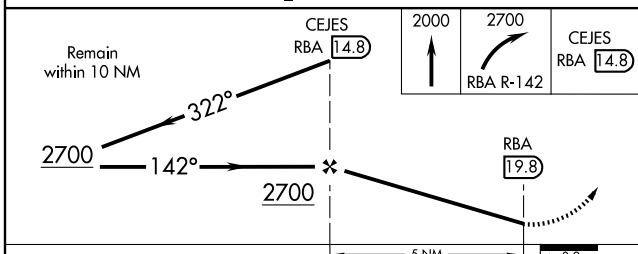
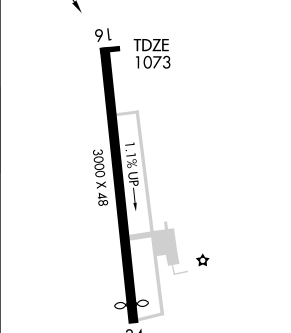
IAF
ROBINSON
108.2 RBA **19.8**
Chan 19



TOPEKA
117.8 TOP **125.8**
Chan 125



ELEV 1073 Rwy 34 ldg 2798'
142° 5.2 NM from FAF



CATEGORY	A	B	C	D
S-16	1540-1	467 (500-1)		NA
CIRCLING	1600-1	527 (600-1)		NA

LIRL Rwy 16-34 0

Knots	60	90	120	150	180
Min:Sec					

ATCHISON, KANSAS
Orig 08213

39°34'N-95°11'W

ATCHISON/AMELIA EARHART (K59)

VOR/DME RWY 16

NC-2, 22 OCT 2009 to 19 NOV 2009

NC-2, 22 OCT 2009 to 19 NOV 2009