

WAAS CH 69408 W34A	APP CRS 342°	Rwy Idg TDZE Apt Elev	5498 299 300
--	------------------------	-----------------------------	---

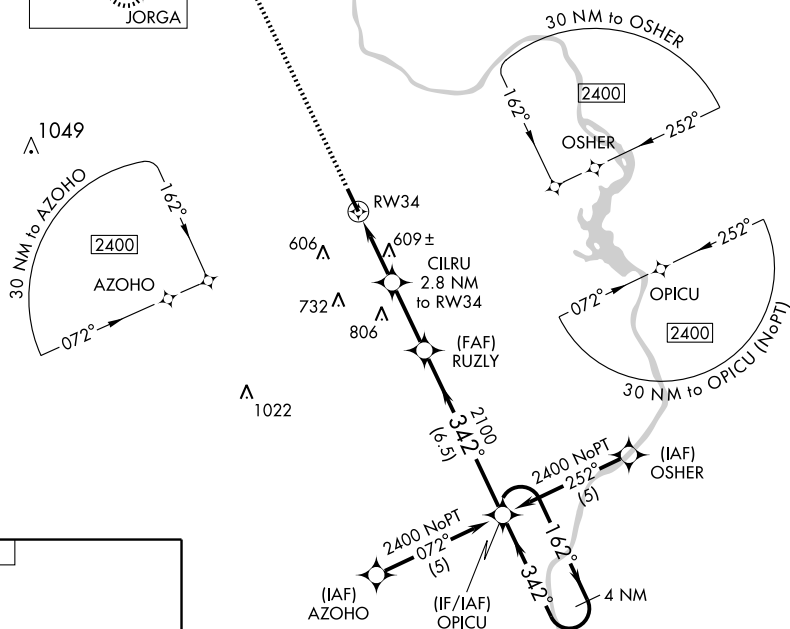
RNAV (GPS) RWY 34

WADESBORO/ANSON COUNTY (A/FP)

⚠ When local altimeter setting not received, use Rockingham altimeter setting and increase DA to 712 and all MDA 60 feet, LPV visibility ¼ mile all Cats., LNAV and Circling Cat. C and D visibility ¼ mile. When VGSi inop, procedure NA at night. DME/DME RNP-0.3 NA. Visibility reduction by helicopters NA.

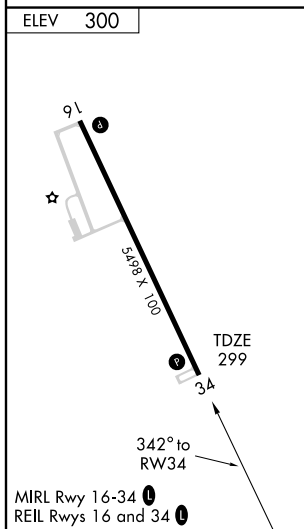
MISSED APPROACH: Climb to 2400 direct JORGA and hold.

AWOS-3 119.325	CHARLOTTE APP CON 120.05 307.8	UNICOM 122.8 (CTAF) 0
--------------------------	--	---------------------------------



SE-2, 22 OCT 2009 to 19 NOV 2009

SE-2, 22 OCT 2009 to 19 NOV 2009



2400	JORGA	OPICU		4 NM Holding Pattern
↑	✧			
*LNAV only.		CILRU 2.8 NM to RW34	RUZLY	OPICU
RW34		*1220	2100	2400
↖ 342°		↗ 342°	↗ 162°	← 342°
2.8 NM		2.7 NM	6.5 NM	
CATEGORY	A	B	C	D
LPV DA	663-1¼		364 (400-1¼)	
LNAV MDA	860-1	561 (600-1)	860-1½ 561 (600-1½)	860-1¾ 561 (600-1¾)
CIRCLING	860-1	560 (600-1)	880-1½ 580 (600-1½)	920-2 620 (700-2)