

RNAV (GPS) RWY 16

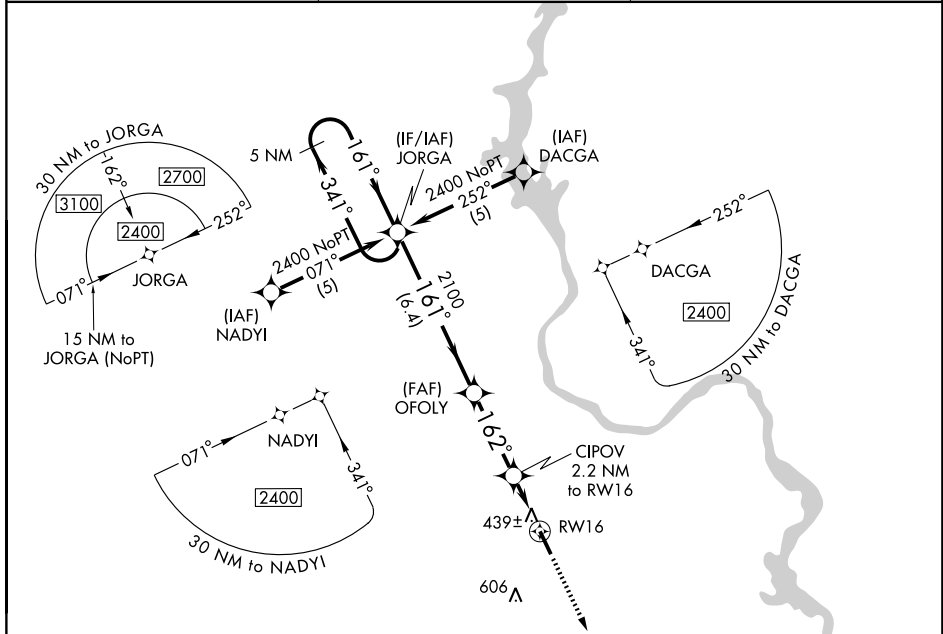
WADESBORO/ANSON COUNTY (AFP)

APP CRS	Rwy Idg	5498
162°	TDZE	300
	Apt Elev	300

▽ When VGSi inoperative, procedure NA at night. DME/DME RNP-0.3 NA.
△ NA Visibility reduction by helicopters NA. When local altimeter setting not received, use Rockingham altimeter setting and increase all MDA 60 feet, LNAV Cat. C and D, and circling Cat. C visibility 1/4 mile.

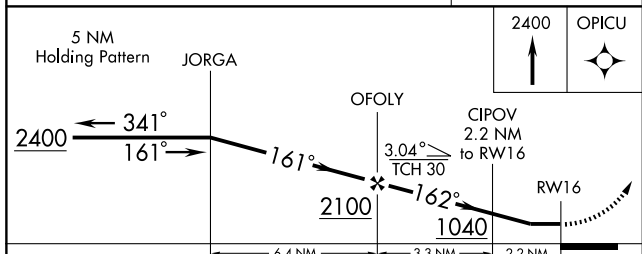
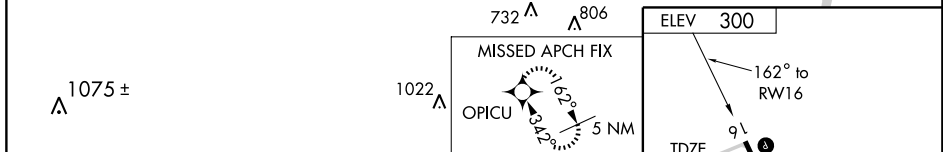
MISSED APPROACH: Climb to 2400 direct OPICU WP and hold.

AWOS-3 119.325	CHARLOTTE APP CON 120.05 307.8	UNICOM 122.8 (CTAF) 0
--------------------------	--	---------------------------------



SE-2, 22 OCT 2009 to 19 NOV 2009

SE-2, 22 OCT 2009 to 19 NOV 2009



CATEGORY	A	B	C	D
S-16 MDA	700-1 400 (400-1)			700-1 1/4 400 (400-1 1/4)
CIRCLING	740-1 440 (500-1)	860-1 560 (600-1)	880-1 1/2 580 (600-1 1/2)	920-2 620 (700-2)

