

RICHMOND, KENTUCKY

AL-6610 (FAA)

VORTAC HYK 112.6 Chan 73	APP CRS 355°	Rwy ldg TDZE Apt Elev	4500 1001 1001
--	------------------------	-----------------------------	---

VOR/DME RNAV or GPS RWY 36

RICHMOND/MADISON (I39)

▲ NA Use Lexington altimeter setting.

MISSED APPROACH: Climb to 3100 then left turn direct ANETT WP and hold.

AWOS-3
119.625

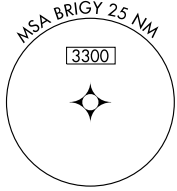
LEXINGTON APP CON
120.15 259.3

UNICOM
122.8 (CTAF) **①**

LEXINGTON
112.6 HYK **⋮⋮⋮**
Chan 73

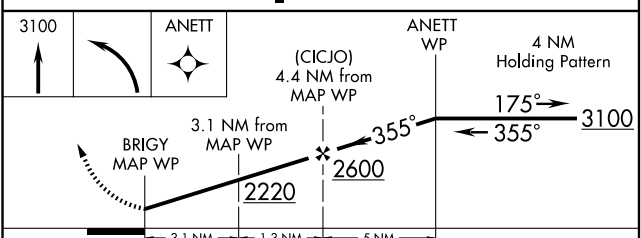
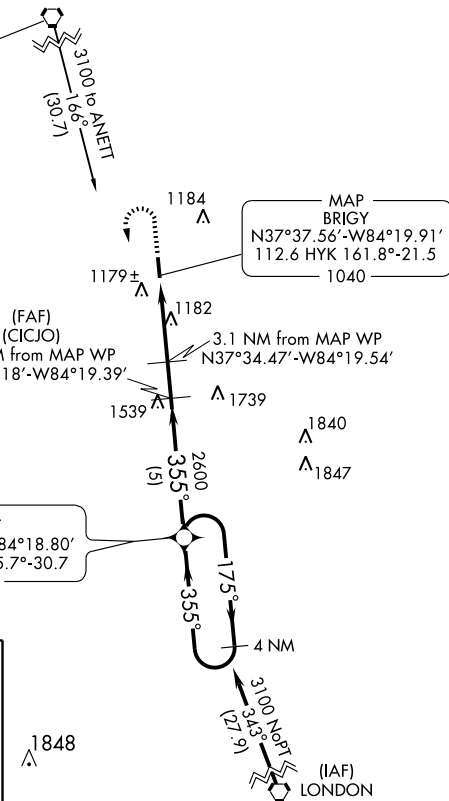
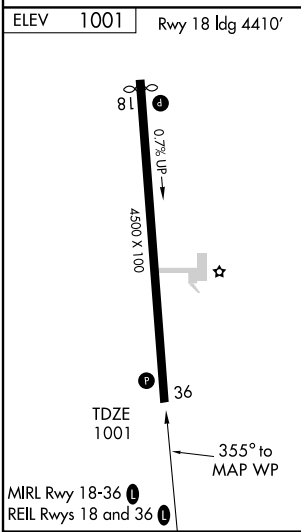
MAP
BRIGY
N37°37.56'-W84°19.91'
112.6 HYK 161.8°-21.5
1040

IAF
ANETT
N37°28.19'-W84°18.80'
112.6 HYK 165.7°-30.7
1040



SE-1, 22 OCT 2009 to 19 NOV 2009

SE-1, 22 OCT 2009 to 19 NOV 2009



CATEGORY	A	B	C	D
S-36	1600-1	599 (600-1)	1600-1½ 599 (600-1½)	1600-1¾ 599 (600-1¾)
CIRCLING	1640-1	639 (700-1)	1640-1¾ 639 (700-1¾)	1640-2 639 (700-2)

RICHMOND, KENTUCKY
Amdt 6 08157

37°38'N-84°20'W

RICHMOND/MADISON (I39)

VOR/DME RNAV or GPS RWY 36