

EL DORADO, KANSAS

AL-6607 (FAA)

GPS RWY 22

EL DORADO/ CAPTAIN JACK THOMAS/EL DORADO (EQA)

APP CRS	Rwy Idg	4204
218°	TDZE	1378
	Apt Elev	1378

▲ NA Use Wichita Mid-Continent altimeter setting.

MISSED APPROACH: Climb to 3000 direct UFGER WP and hold.

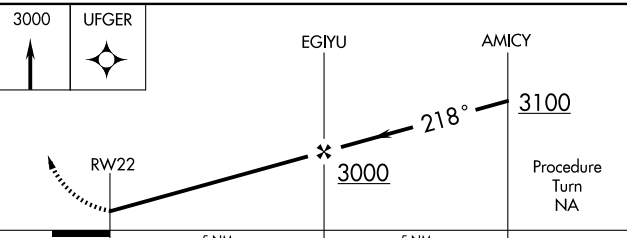
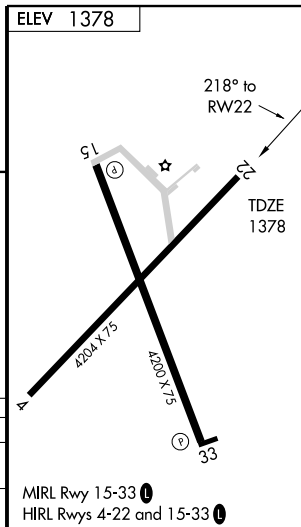
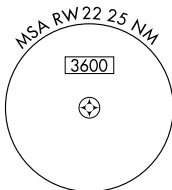
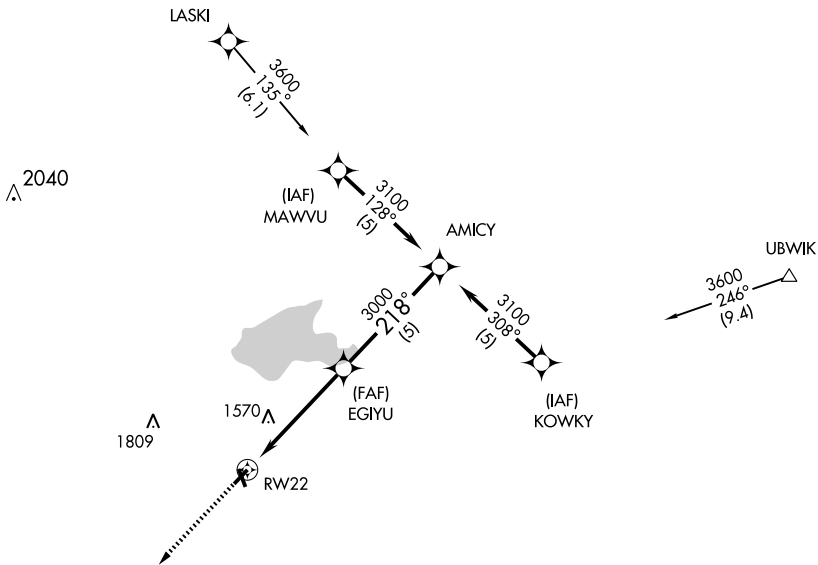
WICHITA APP CON
134.8 269.1

UNICOM
122.8 (CTAF)

122.9 **0**

NC-2, 22 OCT 2009 to 19 NOV 2009

NC-2, 22 OCT 2009 to 19 NOV 2009



CATEGORY	A	B	C	D
S-22	1960-1	582 (600-1)	NA	
CIRCLING	1960-1	582 (600-1)	NA	

ELEV 1378

218° to RW22
TDZE 1378

MIRL Rwy 15-33 **0**
HIRL Rwy 4-22 and 15-33 **0**

EL DORADO, KANSAS
Orig 08213

EL DORADO/ CAPTAIN JACK THOMAS/EL DORADO (EQA)
37°46'N-96°49'W

GPS RWY 22