

EL DORADO, KANSAS

AL-6607 (FAA)

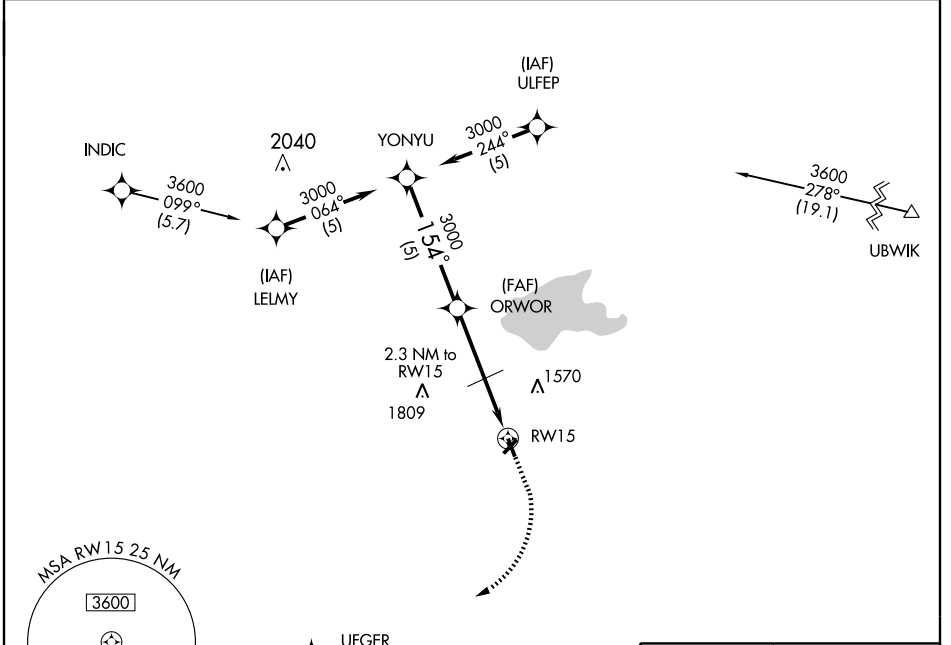
GPS RWY 15

EL DORADO/ CAPTAIN JACK THOMAS/EL DORADO (EQA)

APP CRS 154°	Rwy Idg 4200
	TDZE 1375
	Apt Elev 1378

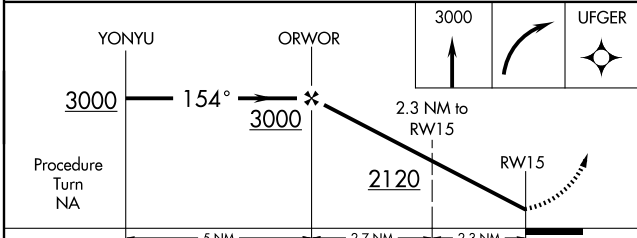
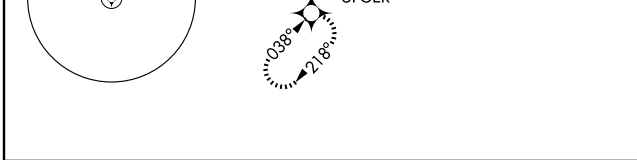
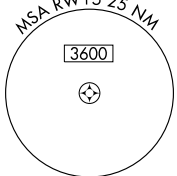
NA Use Wichita Mid-Continent altimeter setting. MISSED APPROACH: Climb to 3000 then right turn direct UFGWR WP and hold.

WICHITA APP CON 134.8 269.1	UNICOM 122.8 (CTAF)	122.9 0
---------------------------------------	-------------------------------	-----------------------

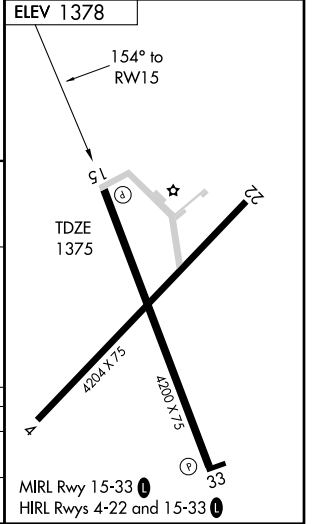


NC-2, 22 OCT 2009 to 19 NOV 2009

NC-2, 22 OCT 2009 to 19 NOV 2009



	5 NM		2.7 NM		2.3 NM	
CATEGORY	A	B	C	D		
S-15	1880-1	505 (600-1)	NA			
CIRCLING	1900-1	522 (600-1)	NA			



EL DORADO, KANSAS
Orig 08213

EL DORADO/ CAPTAIN JACK THOMAS/EL DORADO (EQA)
37°46'N-96°49'W

GPS RWY 15