

RNAV (GPS) RWY 29

BUTLER-CHOCTAW COUNTY (09A)

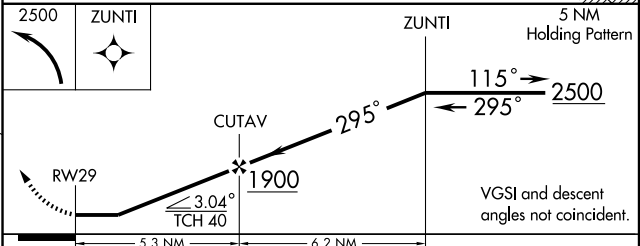
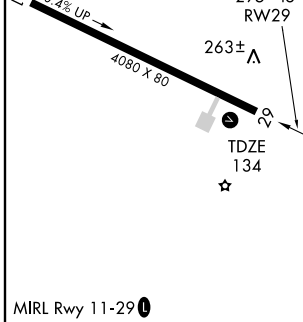
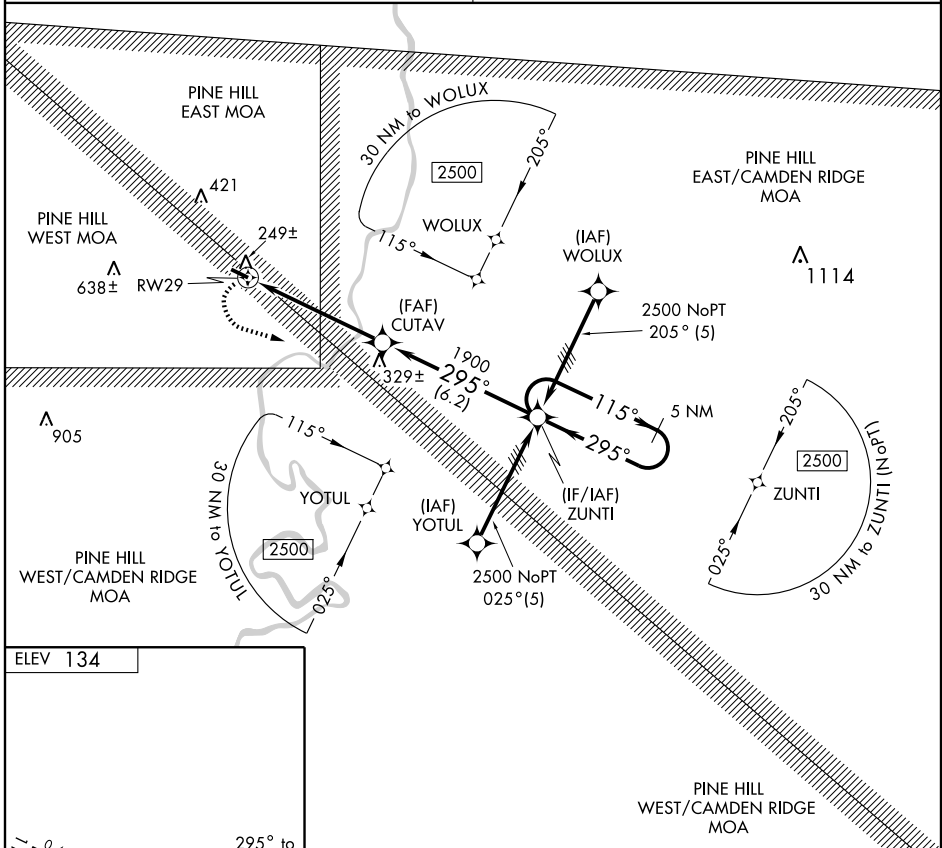
APP CRS	Rwy Idg	4080
295°	TDZE	134
	Apt Elev	134

▼ Use Meridian, MS altimeter setting. Procedure NA at night.
▲ NA Visibility reduction by helicopters NA. Circling not authorized.
 DME/DME RNP-0.3 NA.

MISSED APPROACH: Climbing left turn to 2500 direct ZUNTI and hold.

MERIDIAN APP CON ★
119.2 374.9

UNICOM
122.8 (CTAF) 0



CATEGORY	A	B	C	D
LNAV MDA	620-1	486 (500-1)	620-1¼ 486 (500-1¼)	NA

SE-4, 22 OCT 2009 to 19 NOV 2009

SE-4, 22 OCT 2009 to 19 NOV 2009