

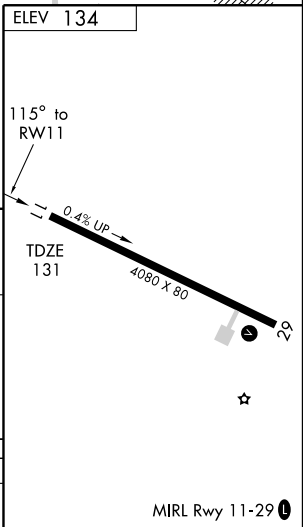
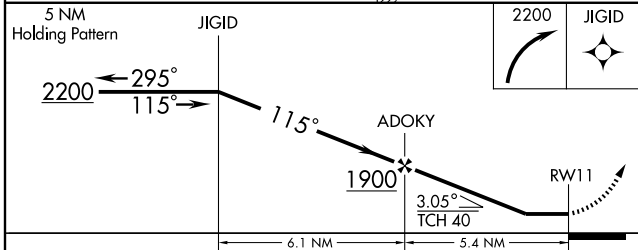
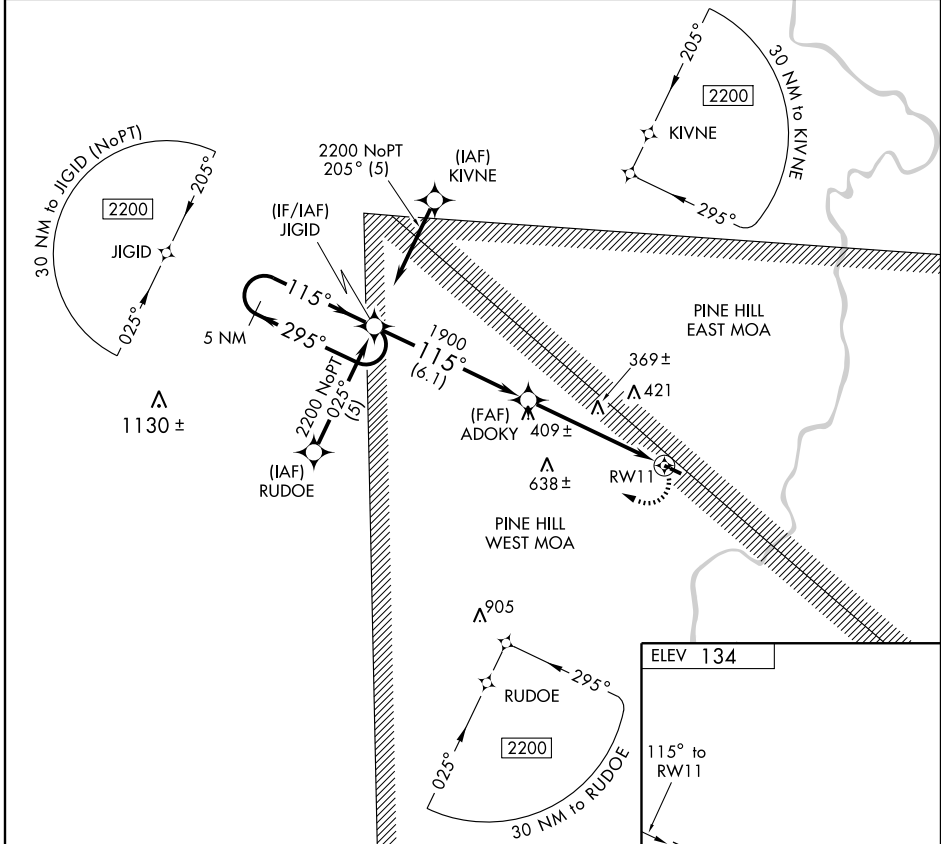
**RNAV (GPS) RWY 11**  
**BUTLER-CHOCTAW COUNTY (09A)**

APP CRS	Rwy Idg	<b>4080</b>
<b>115°</b>	TDZE	<b>131</b>
	Apt Elev	<b>134</b>

**▼** Use Meridian, MS altimeter setting. Procedure NA at night.  
**▲ NA** Visibility reduction by helicopters NA. Circling not authorized.  
 DME/DME RNP-0.3 NA.

**MISSED APPROACH:** Climbing right turn to 2200 direct JIGID and hold.

<b>MERIDIAN APP CON ★</b> <b>119.2 374.9</b>	<b>UNICOM</b> <b>122.8 (CTAF) 0</b>
---	--



CATEGORY	A	B	C	D
LNAV MDA	740-1	609 (700-1)	740-1 <sup>3</sup> / <sub>4</sub> 609 (700-1 <sup>3</sup> / <sub>4</sub> )	NA

SE-4, 22 OCT 2009 to 19 NOV 2009

SE-4, 22 OCT 2009 to 19 NOV 2009