

VOR RWY 18

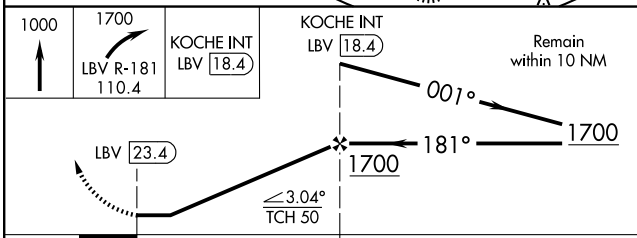
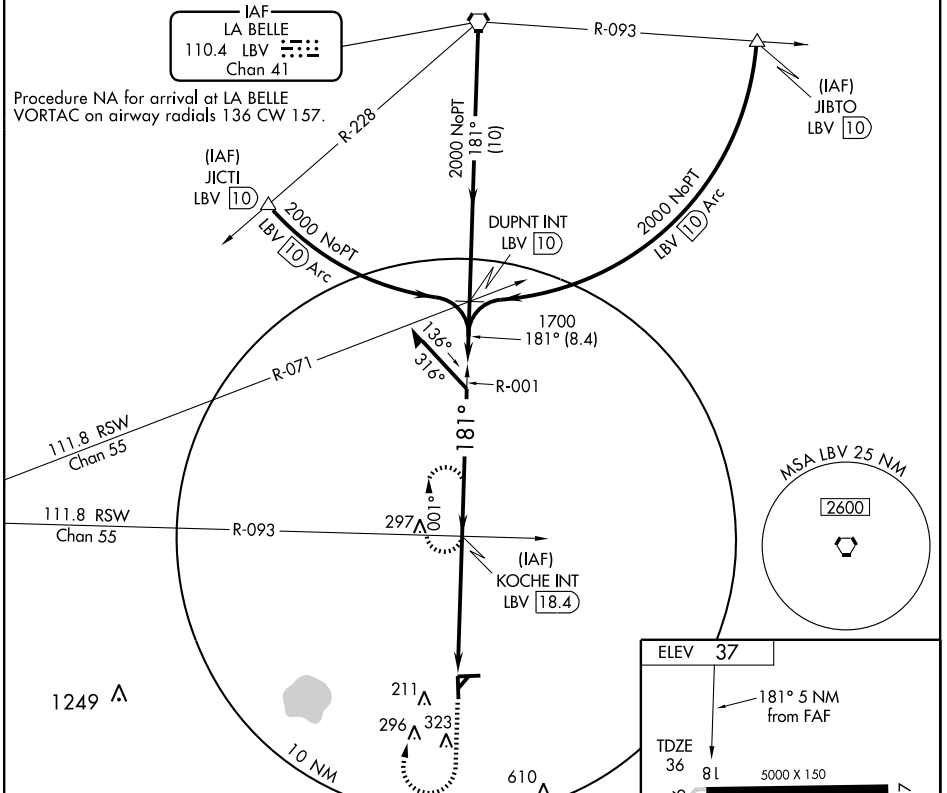
IMMOKALEE RGNL (IMM)

VORTAC LBV 110.4 Chan 41	APP CRS 181°	Rwy Idg TDZE 36 Apt Elev 37	5000
--	------------------------	---	-------------

▼ Visibility reduction by helicopters NA. When local altimeter setting not received, use Southwest Florida Intl altimeter setting and increase all MDA 60 feet; increase Circling Cat C/D visibility ¼ mile.
 ▲ NA Straight-in/Circling to Rwy 18 NA at night. Circling to Rwy 9 NA at night.

MISSED APPROACH: Climb to 1000 then climbing right turn to 1700 via LBV VORTAC R-181 to KOCHIE INT/LBV 18.4 DME and hold.

AWOS-3 118.525	FORT MYERS APP CON * 119.75 327.8	UNICOM 122.9 (CTAF) 0
--------------------------	---	---------------------------------



CATEGORY	A	B	C	D
S-18	560-1 524 (600-1)	560-1¼ 524 (600-1¼)	560-1½ 524 (600-1½)	560-1¾ 524 (600-1¾)
CIRCLING	560-1 523 (600-1)	560-1¼ 523 (600-1¼)	660-1¾ 623 (700-1¾)	660-2 623 (700-2)

MIRL Rwy 9-27
 HIRL Rwy 18-36

FAF to MAP 5 NM

Knots	60	90	120	150	180
Min:Sec	5:00	3:20	2:30	2:00	1:40

SE-3, 22 OCT 2009 to 19 NOV 2009

SE-3, 22 OCT 2009 to 19 NOV 2009