

RNAV (GPS) RWY 9

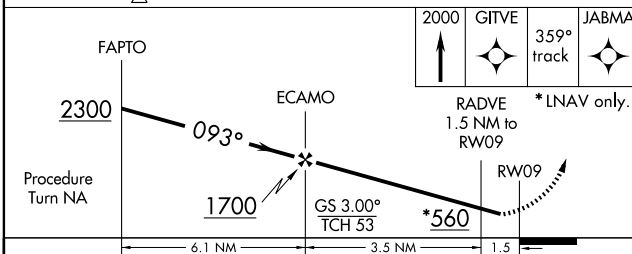
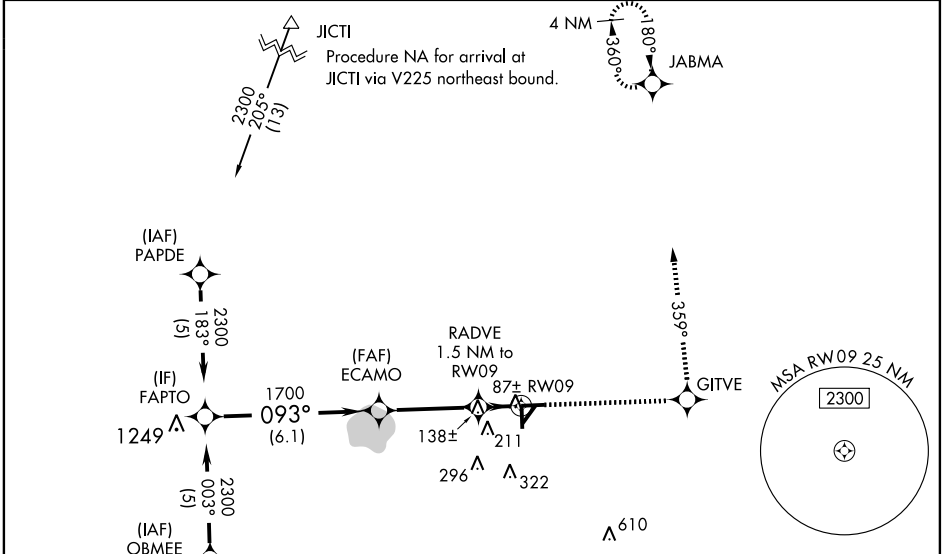
IMMOKALEE RGNL (IMM)

WAAS CH 99713 W09A	APP CRS 093°	Rwy Idg TDZE Apt Elev	5000 37 37
--	------------------------	-----------------------------	---------------------------------------

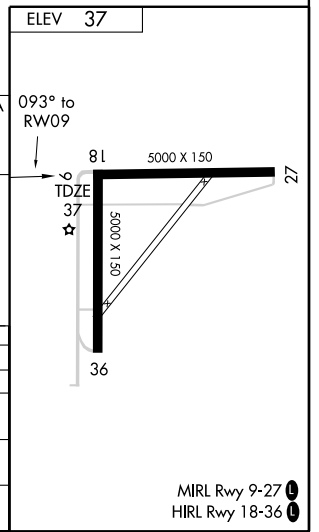
NA For uncompensated Baro-VNAV systems, LNAV/VNAV NA below -15°C (5°F) or above 48°C (118°F). DME/DME RNP-0.3 NA. Visibility reduction by helicopters NA. When local altimeter setting not received, use Southwest Florida Intl altimeter setting and increase LPV DA 48 feet, LNAV/VNAV DA 125 feet and all MDA 60 feet; increase LPV all Cats, LNAV Cat C and Circling Cat C/D visibility ¼ mile, and LNAV/VNAV all Cats visibility ½ mile. Baro-VNAV NA when using Southwest Florida Intl altimeter setting. Straight-in/Circling to Rwy 9 NA at night. Circling to Rwy 18 NA at night.

MISSED APPROACH: Climb to 2000 direct GITVE and via track 359° to JABMA and hold.

AWOS-3 118.525	FORT MYERS APP CON ★ 119.75 327.8	UNICOM 122.9 (CTAF) 0
--------------------------	---	---------------------------------



CATEGORY	A	B	C	D
LPV DA	325-1		288 (300-1)	
LNAV/VNAV DA	401-1¼		364 (400-1¼)	
LNAV MDA	400-1 363 (400-1)		400-1¼ 363 (400-1¼)	
CIRCLING	520-1 483 (500-1)		660-1¾ 623 (700-1¾) 660-2 623 (700-2)	



SE-3, 22 OCT 2009 to 19 NOV 2009

SE-3, 22 OCT 2009 to 19 NOV 2009