

RNAV (GPS) RWY 36

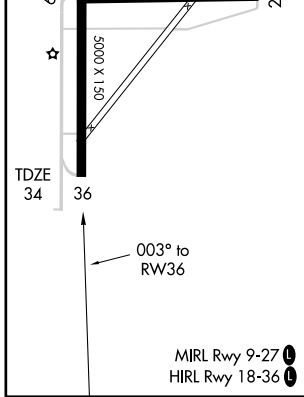
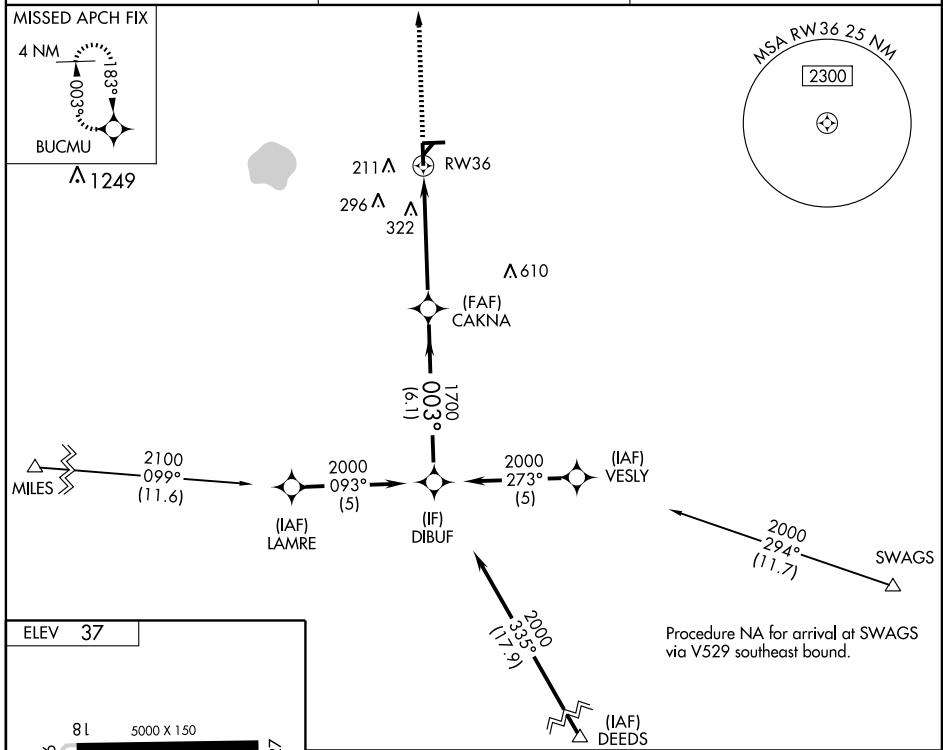
IMMOKALEE RGNL (IMIM)

WAAS CH 73013 W36A	APP CRS 003°	Rwy Idg TDZE 34 Apt Elev 37	5000
---------------------------------	------------------------	---	-------------

⚠ For uncompensated Baro-VNAV systems, LNAV/VNAV NA below -15°C (5°F) or above 48°C (118°F). DME/DME RNP-0.3 NA. When local altimeter setting not received, use Southwest Florida Intl altimeter setting and increase all DA 48 feet and all MDA 60 feet; increase LPV all Cats, LNAV/VNAV all Cats, LNAV and Circling Cat C/D visibility ¼ mile. Baro-VNAV and VDP NA when using Southwest Florida Intl altimeter setting. Circling to Rwy's 9 and 18 NA at night.

⚠ NA MISSED APPROACH: Climb to 2000 direct BUCMU and hold.

AWOS-3 118.525	FORT MYERS APP CON ★ 119.75 327.8	UNICOM 122.9 (CTAF) 0
--------------------------	---	---------------------------------



2000 BUCMU	* RNAV only.	CAKNA	DIBUF	Procedure Turn NA
	*1.6 NM to RW36		2000	GS 3.00° TCH 50
	1.6 NM	3.4 NM	6.1 NM	
CATEGORY	A	B	C	D
LPV DA		284-¾	250 (300-¾)	
LNAV/VNAV DA		662-2¼	628 (700-2¼)	
LNAV MDA	580-1	546 (600-1)	580-1½ 546 (600-1½)	580-1¾ 546 (600-1¾)
CIRCLING	580-1	543 (600-1)	660-1¾ 623 (700-1¾)	660-2 623 (700-2)

SE-3, 22 OCT 2009 to 19 NOV 2009

SE-3, 22 OCT 2009 to 19 NOV 2009