

RNAV (GPS) RWY 27

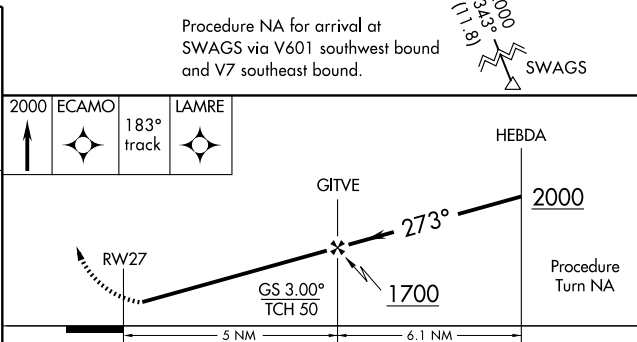
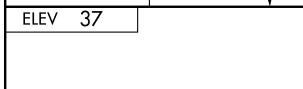
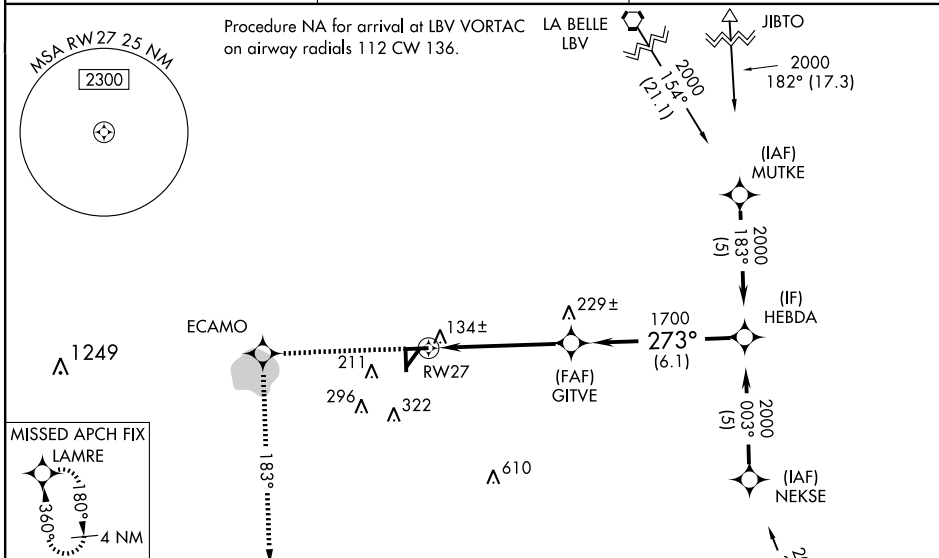
IMMOKALEE RGNL (IMM)

| | | | |
|--|------------------------|-----------------------------|---------------------------------------|
| WAAS CH 69613 W27A | APP CRS 273° | Rwy Idg TDZE Apt Elev | 5000 35 37 |
|--|------------------------|-----------------------------|---------------------------------------|

⚠ For uncompensated Baro-VNAV systems, LNAV/VNAV NA below -15°C (5°F) or above 48°C (118°F). DME/DME RNP-0.3 NA. Visibility reduction by helicopters NA. When local altimeter setting not received, use Southwest Florida Intl altimeter setting and increase all DA 48 feet and all MDA 60 feet; increase LNAV/VNAV all Cats, LNAV Cat C and Circling Cat C/D visibility ¼ mile. Baro-VNAV NA when using Southwest Florida Intl altimeter setting. Straight-in/Circling to Rwy 27 NA at night. Circling to Rwys 9 and 18 NA at night.

MISSED APPROACH:
Climb to 2000
direct ECAMO and
via track 183°
to LAMRE and hold.

| | | |
|--------------------------|---|--|
| AWOS-3 118.525 | FORT MYERS APP CON ★ 119.75 327.8 | UNICOM 122.9 (CTAF) 📻 |
|--------------------------|---|--|



| CATEGORY | A | B | C | D |
|--------------|-------|-------------|------------------------|------------------------|
| LPV DA | | 285-1 | 250 (300-1) | |
| LNAV/VNAV DA | | 404-1¼ | 369 (400-1¼) | |
| LNAV MDA | | 400-1 | 365 (400-1) | 400-1¼ 365 (400-1¼) |
| CIRCLING | 520-1 | 483 (500-1) | 660-1¾ 623 (700-1¾) | 660-2 623 (700-2) |

SE-3, 22 OCT 2009 to 19 NOV 2009

SE-3, 22 OCT 2009 to 19 NOV 2009