

# RNAV (GPS) RWY 18

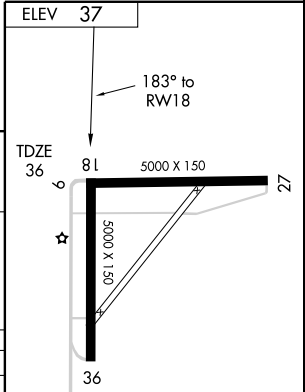
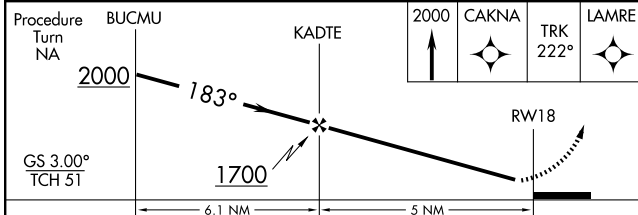
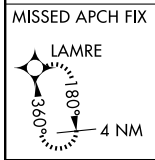
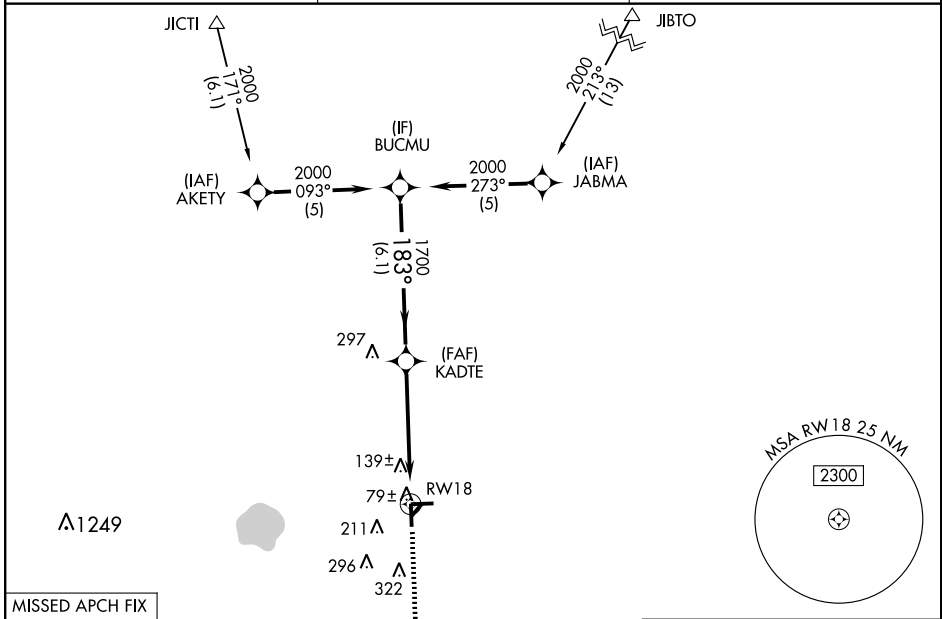
IMMOKALEE RGNL (IMM)

WAAS CH <b>63213</b> W18A	APP CRS <b>183°</b>	Rwy Idg TDZE <b>36</b> Apt Elev <b>37</b>	<b>5000</b>
---------------------------------	------------------------	---	-------------

**NA** For uncompensated Baro-VNAV systems, LNAV/VNAV NA below -1.5°C (5°F) or above 48°C (118°F). DME/DME RNP-0.3 NA. Visibility reduction by helicopters NA. When local altimeter setting not received, use Southwest Florida Intl altimeter setting and increase all DA 48 feet and all MDA 60 feet; increase LNAV Cat C and Circling Cat C/D visibility ¼ mile. Baro-VNAV NA when using Southwest Florida Intl altimeter setting. Straight-in/Circling to Rwy 18 NA at night. Circling to Rwy 9 NA at night.

**MISSED APPROACH:** Climb to 2000 direct CAKNA and via track 222° to LAMRE and hold.

AWOS-3 <b>118,525</b>	FORT MYERS APP CON ★ <b>119,75 327.8</b>	UNICOM <b>122.9 (CTAF) 0</b>
--------------------------	---	---------------------------------



CATEGORY	A	B	C	D
LPV DA		286-1	250 (300-1)	
LNAV/VNAV DA		380-1¼	344 (400-1¼)	
LNAV MDA		400-1	364 (400-1)	400-1¼ 364 (400-1¼)
CIRCLING	520-1	483 (500-1)	660-1¼ 623 (700-1¼)	660-2 623 (700-2)

MIRL Rwy 9-27 0  
HIRL Rwy 18-36 0

SE-3, 22 OCT 2009 to 19 NOV 2009

SE-3, 22 OCT 2009 to 19 NOV 2009