

ORD, NEBRASKA

AL-6602 (FAA)

RNAV (GPS) Z RWY 31

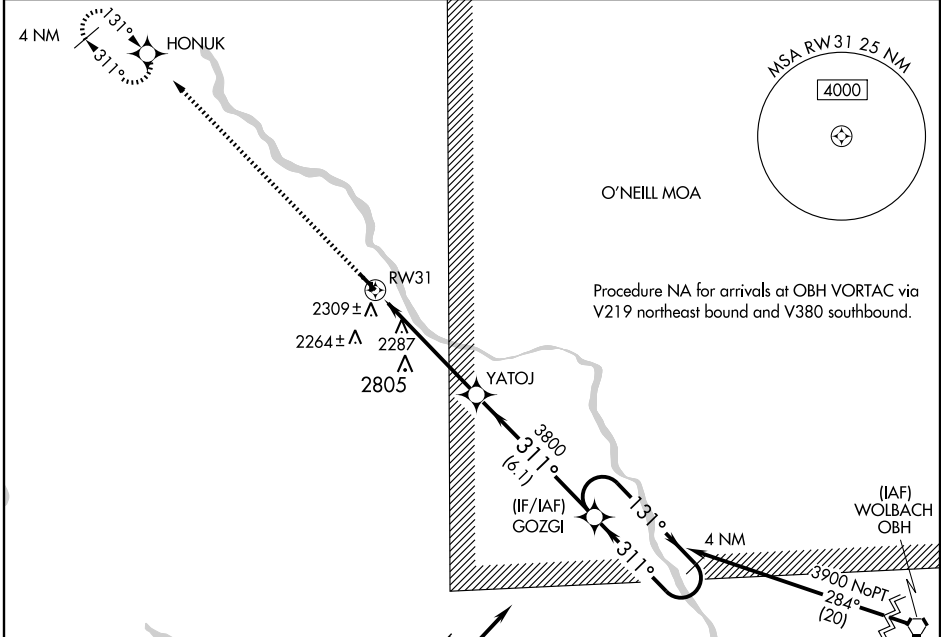
ORD/EVELYN SHARP FIELD (ODX)

WAAS CH 99412 W31A	APP CRS 311°	Rwy Idg TDZE Apt Elev	4501 2064 2070
--	------------------------	-----------------------------	---

Baro-VNAV NA when using Broken Bow altimeter setting. For uncompensated Baro-VNAV systems, LNAV/VNAV NA below -19°C (-2°F) or above 54°C (130°F). DME/DME RNP-0.3 NA. When local altimeter setting not received, use Broken Bow altimeter setting and increase all DA 143 feet and increase all visibilities ½ mile.

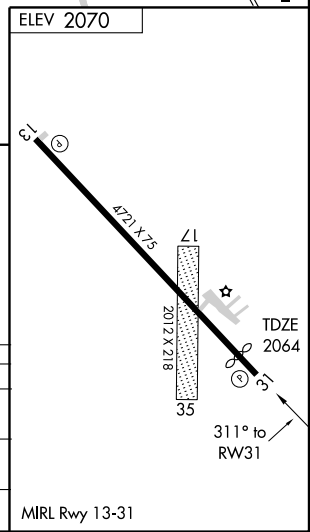
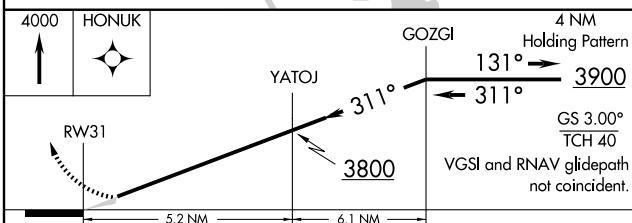
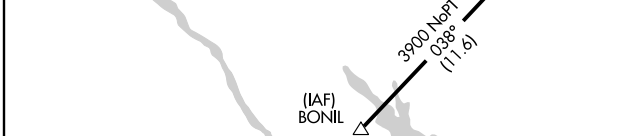
MISSED APPROACH:
Climb to 4000 direct HONUUK and hold.

ASOS 119.925	MINNEAPOLIS CENTER 119.4 278.8	UNICOM 122.8 (CTAF)
------------------------	--	-------------------------------



NC-2, 22 OCT 2009 to 19 NOV 2009

NC-2, 22 OCT 2009 to 19 NOV 2009



CATEGORY	A	B	C	D
LPV DA	2358-1	294 (300-1)		NA
LNAV/ VNAV DA	2566-1¾	502 (500-1¾)		NA
CIRCLING	NA			

ORD, NEBRASKA
Orig 09295

41°37'N-98°57'W

ORD/EVELYN SHARP FIELD (ODX) RNAV (GPS) Z RWY 31