

ORD, NEBRASKA

AL-6602 (FAA)

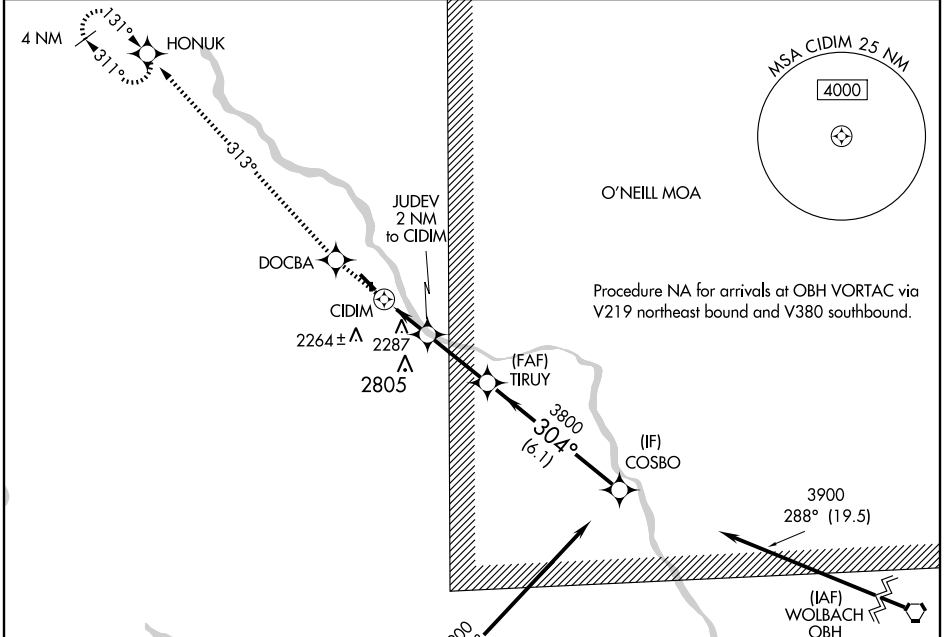
RNAV (GPS) Y RWY 31

ORD/EVELYN SHARP FIELD (ODX)

APP CRS 304°	Rwy Idg 4501
	TDZE 2064
	Apt Elev 2070

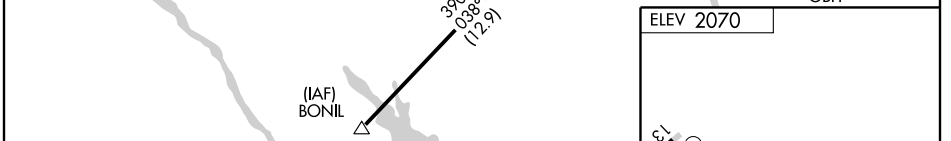
<p>▼ DME/DME RNP-0.3 NA. Circling to Rwy 17/35 NA. VDP NA when using Broken Bow altimeter setting. When local altimeter setting not received, use Broken Bow altimeter setting and increase all MDA 160 feet and circling Cat B visibility ¼ mile.</p>	<p>▲ MISSED APPROACH: Climb to 4000 direct DOCBA and via 313° track to HONUUK and hold.</p>
---	--

ASOS 119.925	MINNEAPOLIS CENTER 119.4 278.8	UNICOM 122.8 (CTAF)
------------------------	--	-------------------------------

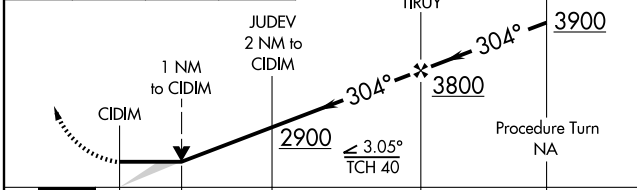


NC-2, 22 OCT 2009 to 19 NOV 2009

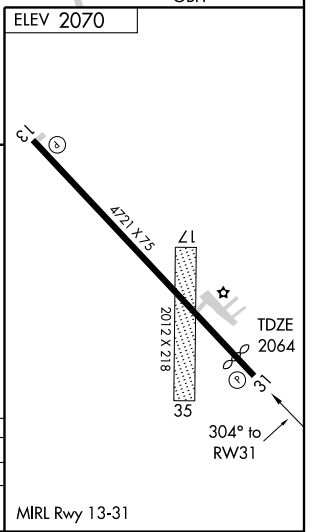
NC-2, 22 OCT 2009 to 19 NOV 2009



4000 ↑	DOCBA ✧	313° TRK	HONUUK ✧	VGSI and descent angles not coincident.	COSBO
-----------	------------	-------------	-------------	---	-------



CATEGORY	A	B	C	D
LNAV MDA	2580-1	516 (600-1)		NA
CIRCLING	2680-1	610 (700-1)		NA



ORD, NEBRASKA
Orig 09295

41°37'N-98°57'W

ORD/EVELYN SHARP FIELD (ODX)

RNAV (GPS) Y RWY 31