

RNAV (GPS) RWY 13

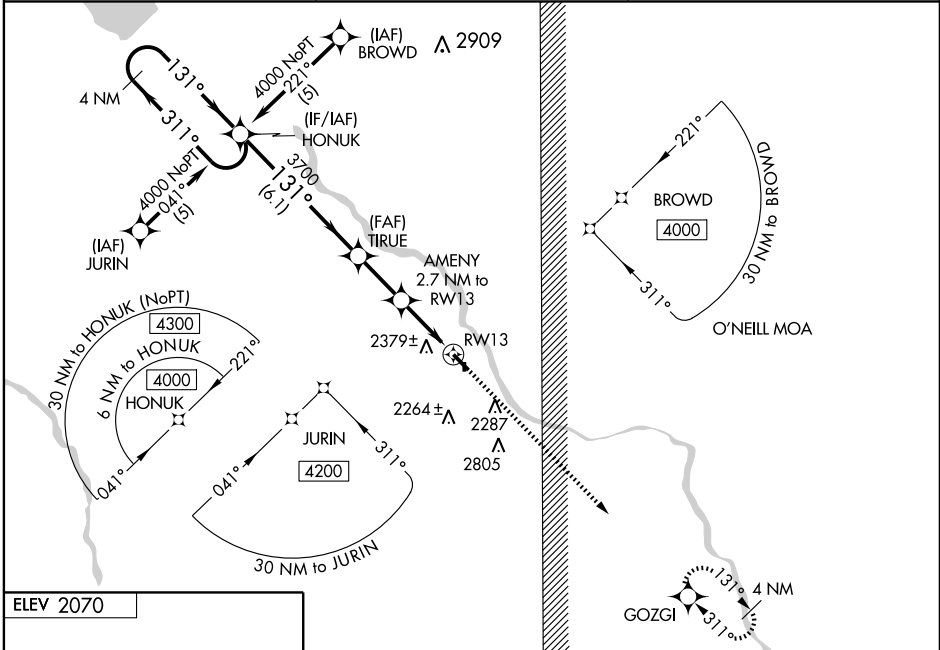
ORD/EVELYN SHARP FIELD (ODX)

WAAS CH 90312 W13A	APP CRS 131°	Rwy Idg 4721 TDZE 2070 Apt Elev 2070
--	------------------------	---

▼ Baro-VNAV NA when using Broken Bow altimeter setting. For uncompensated Baro-VNAV systems, LNAV/VNAV NA below -19°C (-2°F) or above 54°C (130°F). DME/DME RNP-0.3 NA. Visibility reduction by helicopters NA. Circling to Rwy 17/35 NA. VDP NA when using Broken Bow altimeter setting. When local altimeter setting not received, use Broken Bow altimeter setting and increase all DA 143 feet and all MDA 160 feet; increase all LPV and LNAV/VNAV visibilities ½ mile, and circling Cat B visibility ¼ mile.

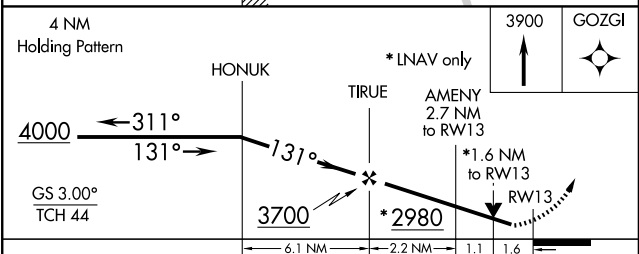
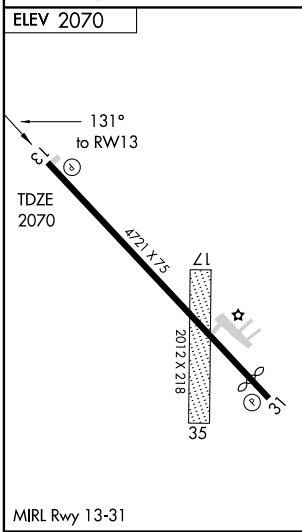
MISSED APPROACH:
Climb to 3900 direct GOZGI and hold.

ASOS 119.925	MINNEAPOLIS CENTER 119.4 278.8	UNICOM 122.8 (CTAF)
------------------------	--	-------------------------------



NC-2, 22 OCT 2009 to 19 NOV 2009

NC-2, 22 OCT 2009 to 19 NOV 2009



CATEGORY	A	B	C	D
LPV DA	2444-1¼	374 (400-1¼)		NA
LNAV/VNAV DA	2698-2¼	628 (700-2¼)		NA
LNAV MDA	2620-1	550 (600-1)		NA
CIRCLING	2680-1	610 (700-1)		NA