

MEEKER, COLORADO

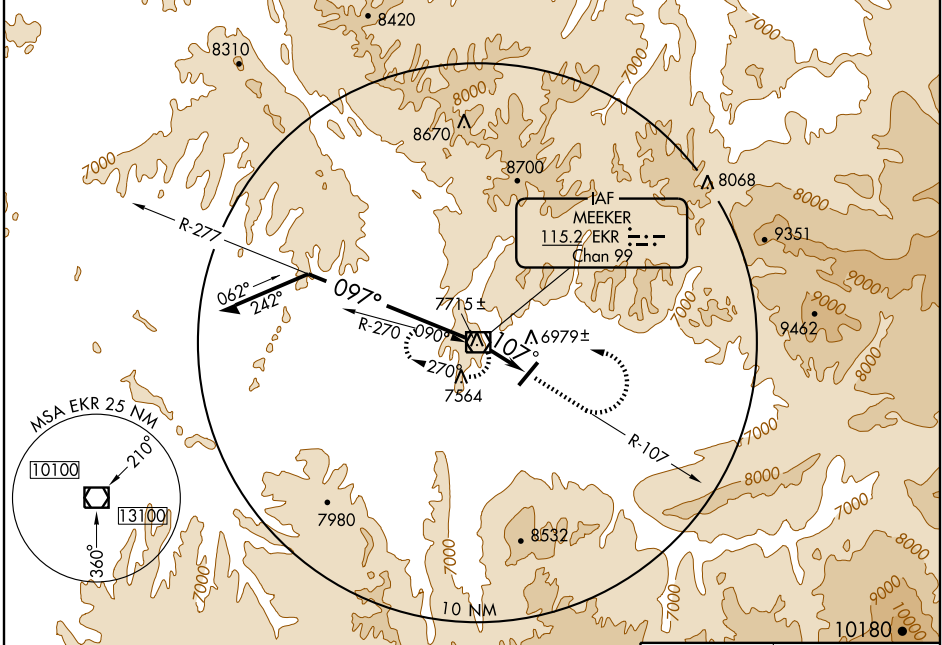
AL-6601 (FAA)

VOR-A
MEEKER (E/O)

VOR/DME EKR 115.2 Chan 99	APP CRS 107°	Rwy Idg TDZE Apt Elev N/A N/A 6421
---	------------------------	---

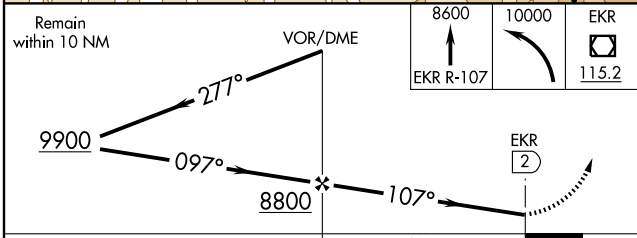
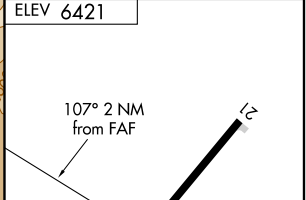
V **NA** Circling not authorized west of Rwy 3-21. MISSED APPROACH: Climb via EKR VOR/DME R-107 to 8600, then climbing left turn to 10000 direct EKR VOR/DME and hold.

ASOS 135.525	DENVER CENTER 134.5 327.8	UNICOM 122.8(CTAF)
------------------------	-------------------------------------	------------------------------

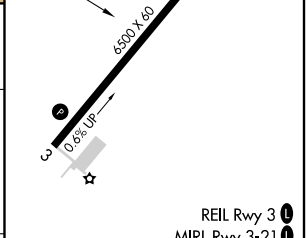


SW-1, 22 OCT 2009 to 19 NOV 2009

SW-1, 22 OCT 2009 to 19 NOV 2009



CATEGORY	A	B	C	D
	8000-1¼ 1579 (1600-1¼)	8000-1½ 1579 (1600-1½)	8000-3 1579 (1600-3)	NA



FAF to MAP 2 NM					
Knots	60	90	120	150	180
Min:Sec	2:00	1:20	1:00	0:48	0:40

MEEKER, COLORADO
Amdt 1 08157

40° 03'N - 107° 53'W

MEEKER (E/O)
VOR-A