

SAIPAN, CQ

AL-6596 (FAA)

GPS RWY 9

ROTA INTL (GRO)(PGRO)

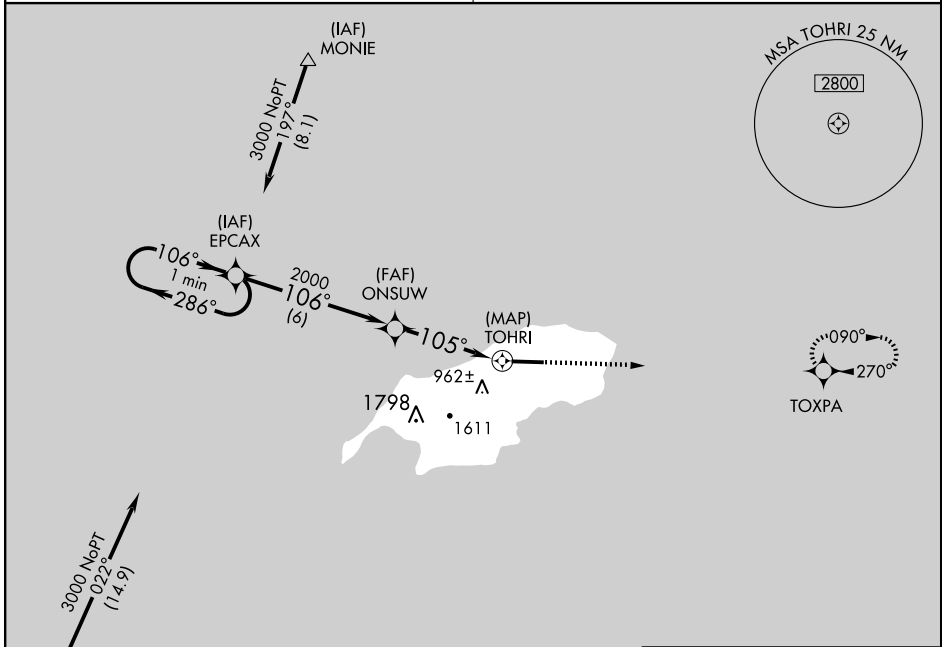
APP CRS	Rwy Idg	6000
105°	TDZE	593
	Apt Elev	607

⚠ Cat C, D circling not authorized south of Rwy 9-27.
⚠ When local altimeter setting not received, procedure not authorized.

MISSED APPROACH: Climb to 3000 via 090° course to TOXPA and hold.

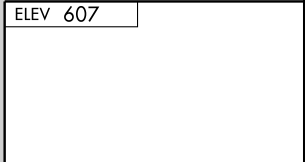
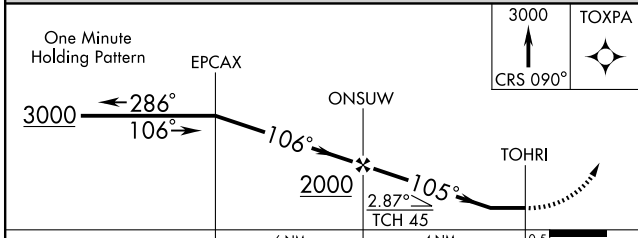
GUAM CENTER
120.5 263.0

CTAF
123.6

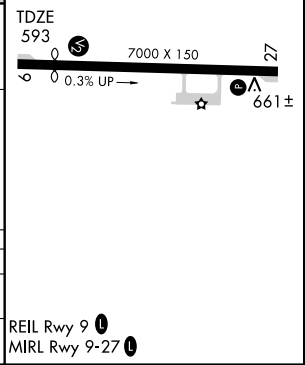


PAC, 22 OCT 2009 to 17 DEC 2009

PAC, 22 OCT 2009 to 17 DEC 2009



CATEGORY	A	B	C	D
S-9		940-1 347 (400-1)		940-1¼ 347 (400-1¼)
CIRCLING	1180-1 573 (600-1)	1220-1 613 (700-1)	1220-1¾ 613 (700-1¾)	1220-2 613 (700-2)



SAIPAN, CQ
 Orig-C 09295

14°10'N-145°14'E

GPS RWY 9