

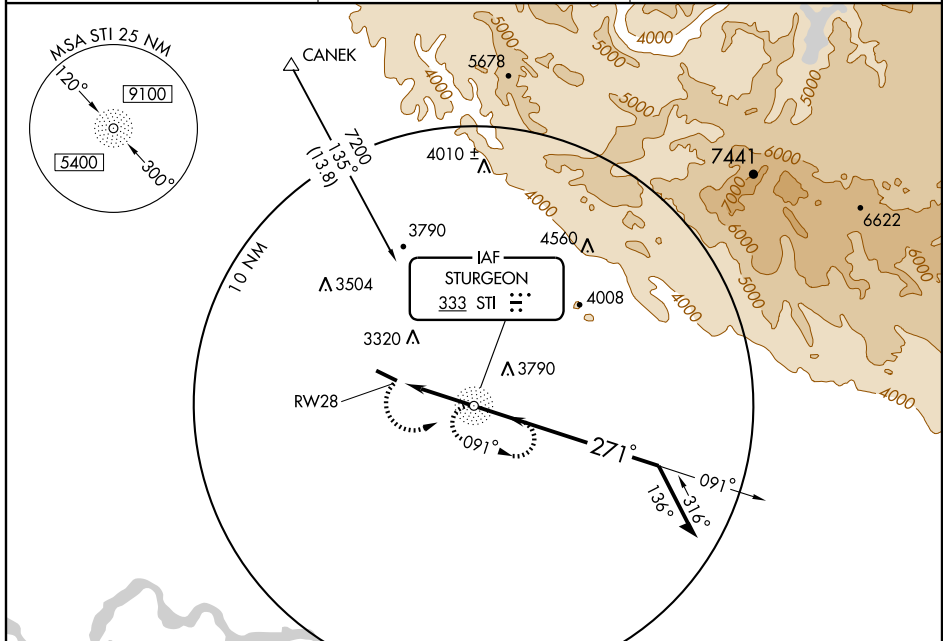
NDB or GPS RWY 28

MOUNTAIN HOME MUNI (U76)

NDB STI 333	APP CRS 271°	Rwy Idg TDZE Apt Elev	5000 3162 3164
-----------------------	------------------------	-----------------------------	---

▼ Use Mountain Home AFB altimeter setting, when not received procedure not authorized.
▲NA MISSED APPROACH: Climbing left turn to 6000 direct to STI NDB and hold.

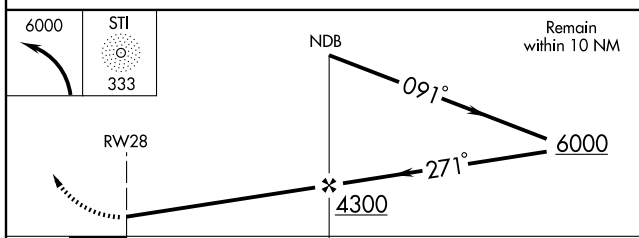
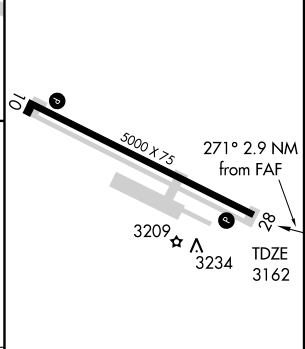
AWOS-3 122.8	MOUNTAIN HOME APP CON * 124.8 259.1	UNICOM 122.8 (CTAF) 0
------------------------	---	---------------------------------



NW-1, 22 OCT 2009 to 19 NOV 2009

NW-1, 22 OCT 2009 to 19 NOV 2009

ELEV	3164
------	-------------



CATEGORY	A	B	C	D
S-28	3720-1 558 (600-1)		3720-1½ 558 (600-1½)	3720-1¾ 558 (600-1¾)
CIRCLING	3720-1 556 (600-1)		3760-1½ 596 (600-1½)	3840-2¼ 676 (700-2¼)

REIL Rwys 10 and 28	0
MIRL Rwy 10-28	0
FAF to MAP 2.9 NM	
Knots	60 90 120 150 180
Min:Sec	2:54 1:56 1:27 1:10 0:58