

FORT CARSON, COLORADO

VOR or GPS RWY 31

VOR/DME FCS 108.8 Chan 25	APCH CRS 310°	Rwy Idg TDZE Arpt Elev 4574 5823 5838
---	-------------------------	---

AL-6594 [USA]

BUTTS AAF (KFCS)

When control zone not in effect use Colorado Springs, CO altimeter setting.

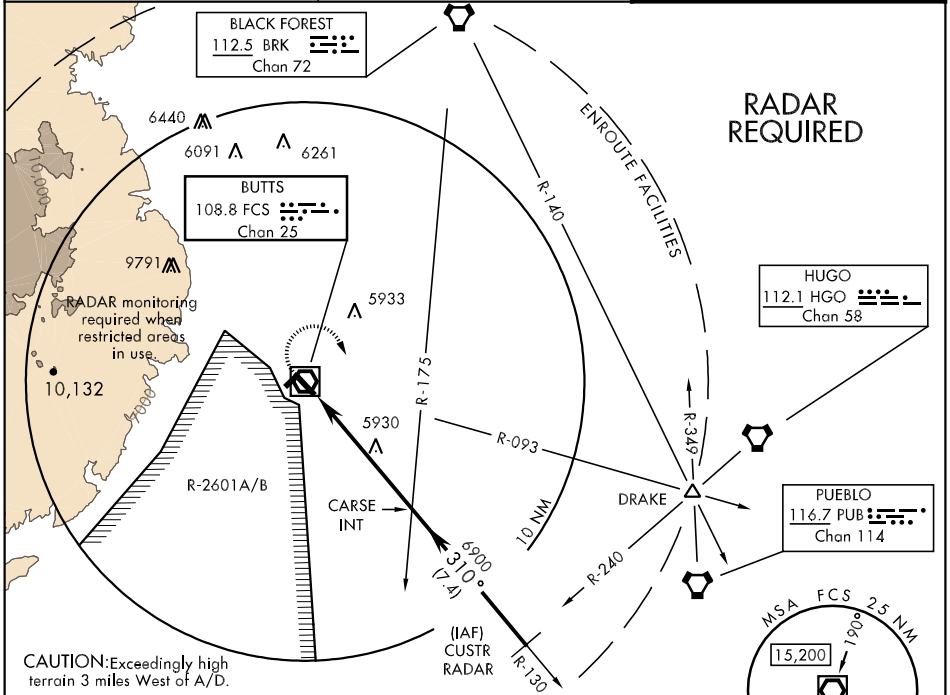
MISSED APPROACH: Climbing right turn to 9000 via FCS R-093 to DRAKE INT.

NA

ATIS
108.8

SPRINGS APP CON
124.0 257.875

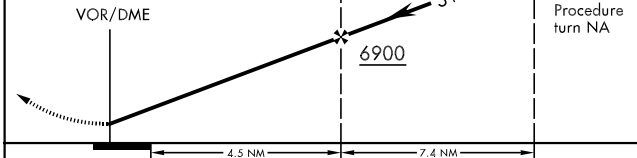
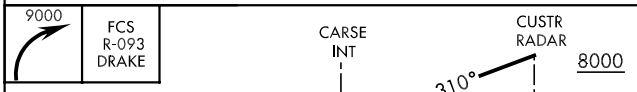
BUTTS TOWER
125.5 0 229.4 41.5



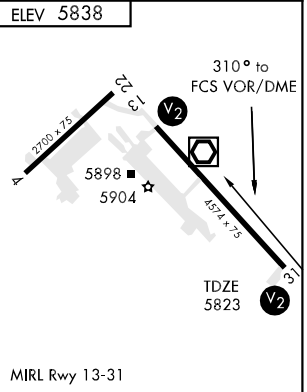
SW-1, 22 OCT 2009 to 19 NOV 2009

SW-1, 22 OCT 2009 to 19 NOV 2009

CAUTION: Exceedingly high terrain 3 miles West of A/D.



CATEGORY	A	B	C	D
S-31	6200-1	377	(400-1)	NA
CIRCLING	6340-1	502 (600-1)	6340-1½ 502 (600-1½)	NA
CITY OF COLORADO SPRINGS MUNI ALTIMETER SETTING MINIMUMS				
S-31	6260-1	437 (500-1)	6260-1¼ 437 (500-1¼)	NA
CIRCLING	6400-1	562 (600-1)	6420-1½ 582 (600-1½)	NA



FORT CARSON, COLORADO
Amdt 3A 09127

38°41'N-104°46'W

BUTTS AAF (KFCS)

VOR or GPS RWY 31