

CHICKASHA, OKLAHOMA

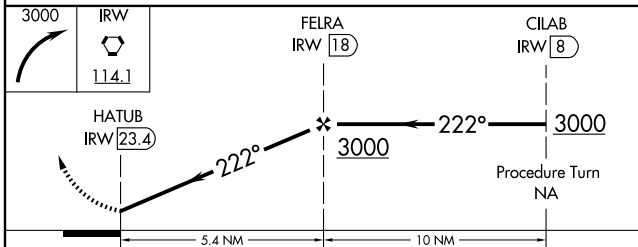
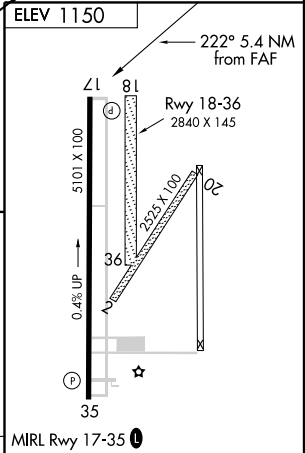
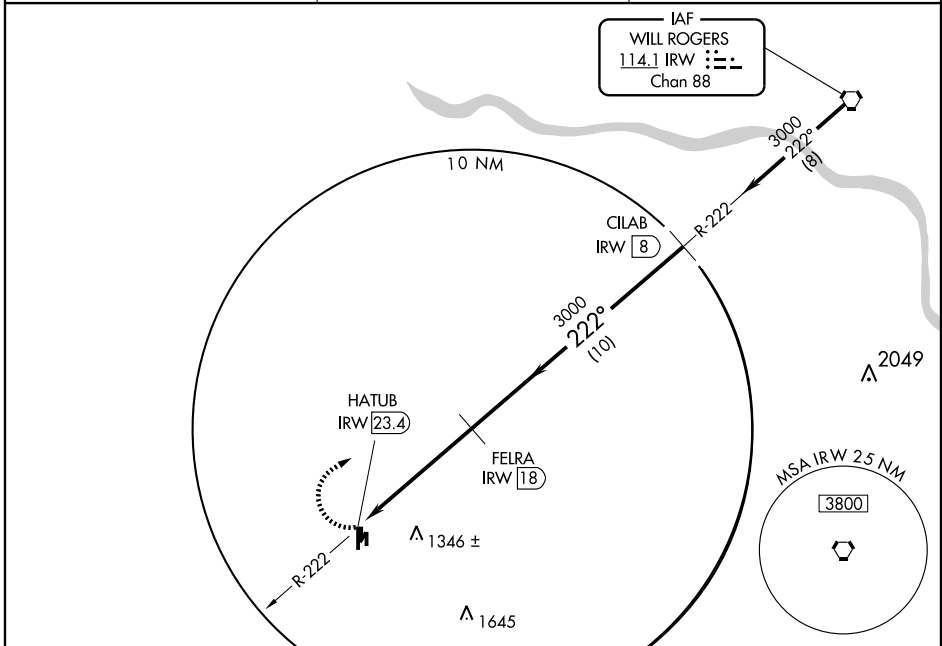
AL-6592 (FAA)

VOR/DME-A
CHICKASHA MUNI (CHK)

VORTAC IRW 114.1 Chan 88	APP CRS 222°	Rwy Idg TDZE Apt Elev 1150	N/A N/A
--	------------------------	---	--------------------------

▲ NA If local altimeter not received; use Oklahoma City/Will Rogers World altimeter setting and increase all MDAs 80 feet. MISSED APPROACH: Climbing right turn to 3000 direct IRW VORTAC.

AWOS-3 118.175	OKE CITY APP CON 124.6 266.8	UNICOM 123.0 (CTAF) 0
--------------------------	--	---------------------------------



CATEGORY	A	B	C	D	Knots 60 90 120 150 180 Min:Sec
CIRCLING	1660-1 510 (600-1)	1660-1¼ 510 (600-1¼)	1660-1½ 510 (600-1½)	NA	

CHICKASHA, OKLAHOMA
Amdt 1 08269

35°06'N-97°58'W

CHICKASHA MUNI (CHK)
VOR/DME-A

SC-1, 22 OCT 2009 to 19 NOV 2009

SC-1, 22 OCT 2009 to 19 NOV 2009