

RNAV (GPS) RWY 35

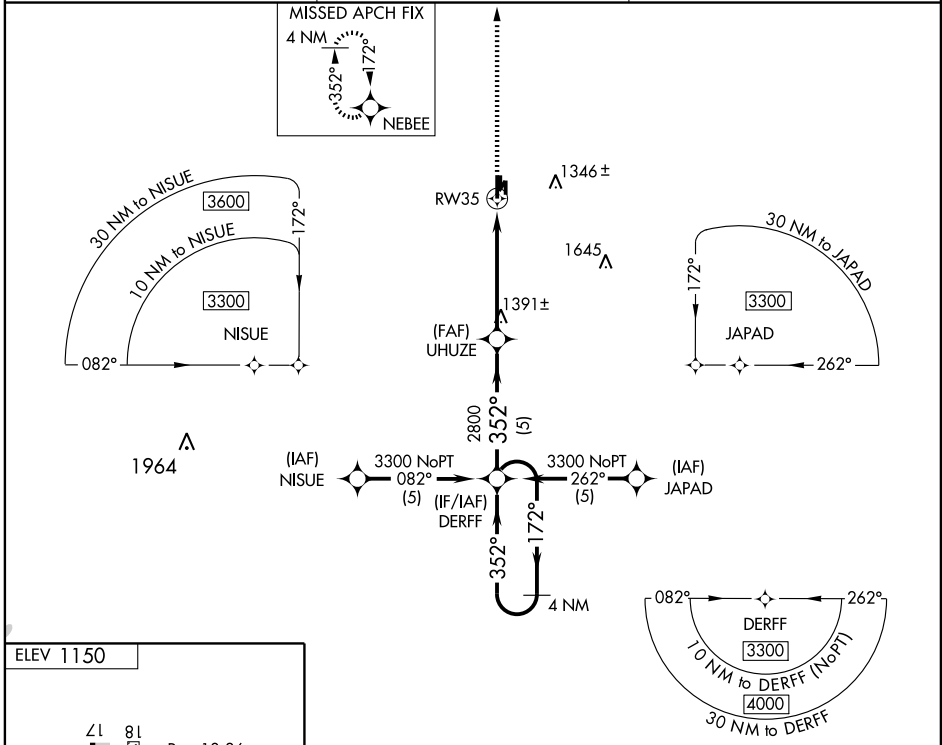
CHICKASHA MUNI (CHK)

APP CRS	Rwy Idg	5101
352°	TDZE	1138
	Apt Elev	1150

NA Baro-VNAV NA below -17°C (1°F). If local altimeter not received; use Oklahoma City/Will Rogers World altimeter setting and increase all DAs/MDAs 80 feet. Baro-VNAV and VDP NA when using Oklahoma City/Will Rogers World altimeter setting. GPS or RNP-0.3 required. DME/DME RNP-0.3 NA.

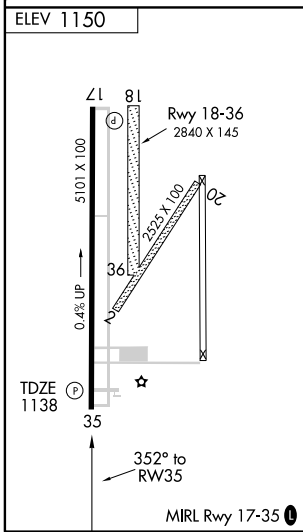
MISSED APPROACH: Climb to 3300 direct NEBEE WP and hold.

AWOS-3 118.175	OKE CITY APP CON 124.6 266.8	UNICOM 123.0 (CTAF) 0
--------------------------	--	---------------------------------



SC-1, 22 OCT 2009 to 19 NOV 2009

SC-1, 22 OCT 2009 to 19 NOV 2009



3300	NEBEE	*LNAV only	UHUZE	DERFF	4 NM Holding Pattern
		*1.3 NM to RW35	352°	172°	3300
		1.3	3.7 NM	5 NM	GS 3.00° TCH 44
CATEGORY	A	B	C	D	
GLS PA DA	NA				
LNAV/VNAV DA	1440-1 302 (300-1)			NA	
LNAV MDA	1580-1	442 (500-1)	1580-1¼ 442 (500-1½)	NA	
CIRCLING	1580-1 430 (500-1)	1600-1 450 (500-1)	1620-1½ 470 (500-1½)	NA	