

RNAV (GPS) RWY 17

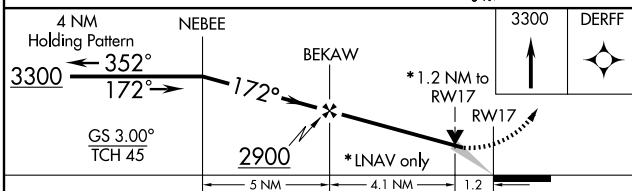
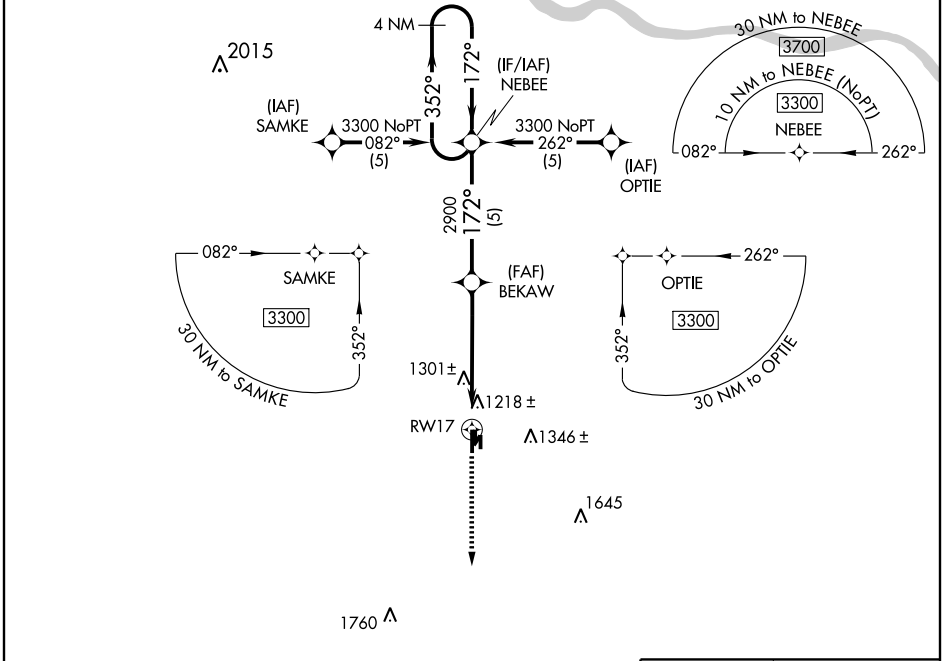
CHICKASHA MUNI (CHK)

APP CRS 172°	Rwy Idg 5101
	TDZE 1149
	Apt Elev 1150

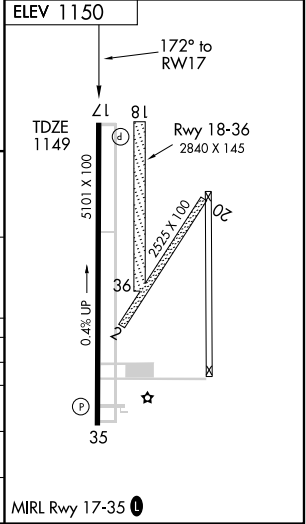
NA BARO-VNAV NA below -17°C (+2°F). If local altimeter not received; use Oklahoma City/Will Rogers World altimeter setting and increase all DAs/MDAs 80 feet and all LNAV/VNAV visibilities ½ mile. BARO-VNAV and VDP NA when using Oklahoma City/Will Rogers World altimeter setting. GPS or RNP-0.3 required. DME/DME RNP-0.3 NA.

MISSED APPROACH: Climb to 3300 direct DERFF WP and hold.

AWOS-3 118.175	OKE CITY APP CON 124.6 266.8	UNICOM 123.0 (CTAF) 0
--------------------------	----------------------------------------	---------------------------------



CATEGORY	A	B	C	D
GLS PA DA	NA			
LNAV/VNAV DA	1480-1¼ 331 (400-1¼)			NA
LNAV MDA	1560-1	411 (500-1)	1560-1¼ 411 (500-1¼)	NA
CIRCLING	1560-1¼ 410 (500-1¼)	1600-1¼ 450 (500-1¼)	1620-1½ 470 (500-1½)	NA



SC-1, 22 OCT 2009 to 19 NOV 2009

SC-1, 22 OCT 2009 to 19 NOV 2009