

JOHNSON, KANSAS

AL-6590 (FAA)

RNAV (GPS) RWY 35

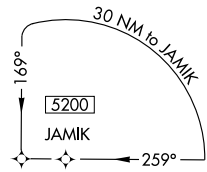
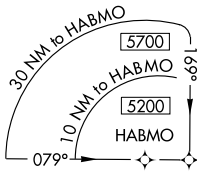
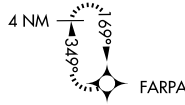
JOHNSON/STANTON COUNTY MUNI (2K3)

APP CRS 349°	Rwy Idg 4100
	TDZE 3324
	Apt Elev 3324

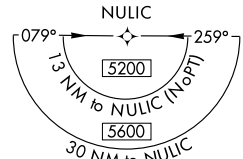
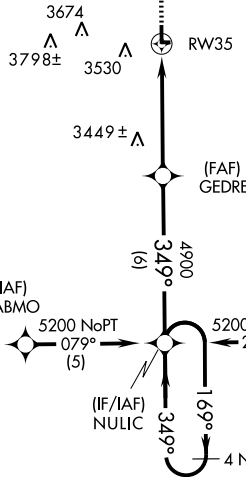
NA Obtain local altimeter setting on CTAF, if not received, use ULYSSES altimeter setting and increase all MDAs 80 feet. GPS or RNP-0.3 required. DME/DME RNP-0.3 NA. Procedure NA at night.

MISSED APPROACH: Climb to 5200 direct FARPA WP and hold.

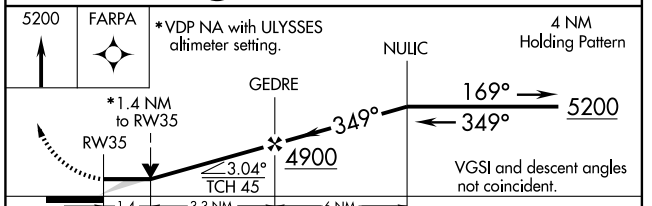
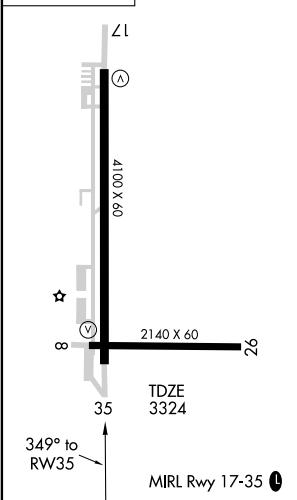
AWOS-3 124.175	KANSAS CITY CENTER 125.2 269.4	UNICOM 122.8 (CTAF)
--------------------------	--	-------------------------------



3913±



ELEV 3324



CATEGORY	A	B	C	D
LNAV MDA	3720-1 396 (400-1)			3720-1¼ 396 (400-1¼)
CIRCLING	3760-1 436 (500-1)	3840-1 516 (600-1)	3840-1½ 516 (600-1½)	3880-2 556 (600-2)

JOHNSON, KANSAS

Orig 08045

JOHNSON/STANTON COUNTY MUNI (2K3)

37°35' N-101°44' W

RNAV (GPS) RWY 35

NC-2, 22 OCT 2009 to 19 NOV 2009

NC-2, 22 OCT 2009 to 19 NOV 2009