

JOHNSON, KANSAS

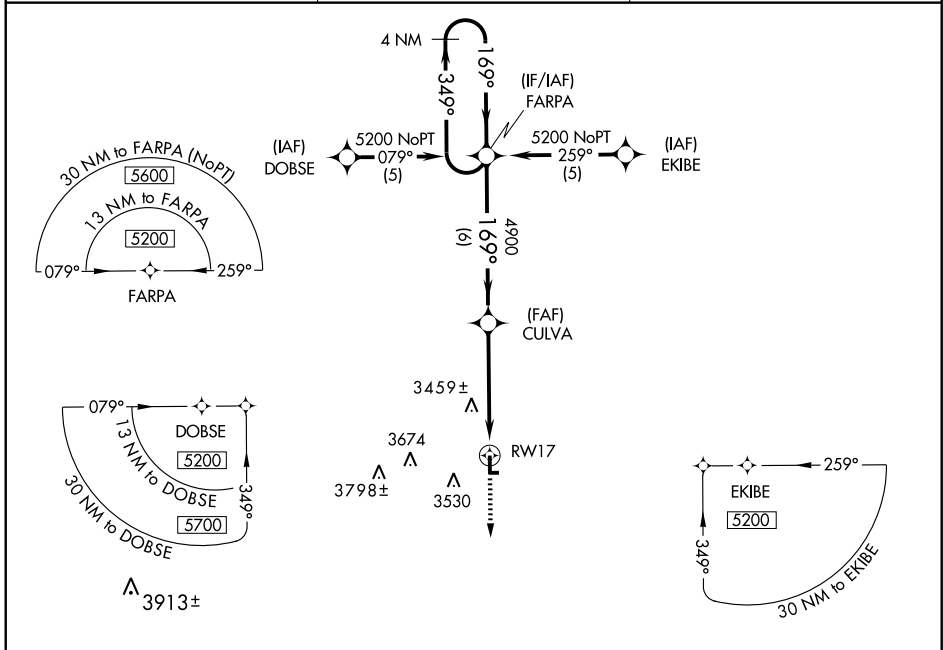
AL-6590 (FAA)

APP CRS 169°	Rwy Idg 4100
	TDZE 3324
	Apt Elev 3324

RNAV (GPS) RWY 17

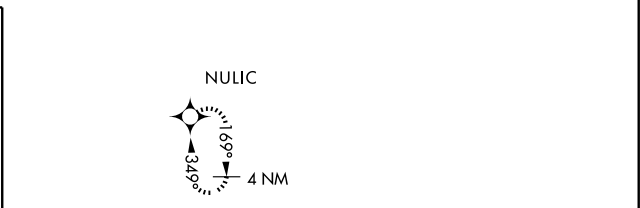
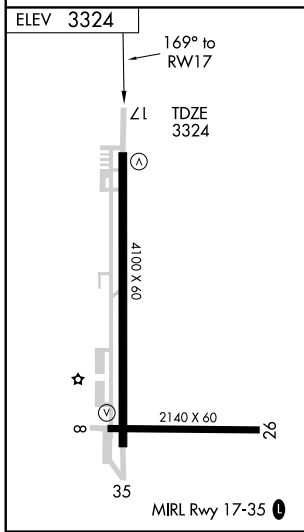
JOHNSON/ STANTON COUNTY MUNI (2K3)

<p>▲ NA Obtain local altimeter setting on CTAF, if not received, use ULYSSES altimeter setting and increase all MDAs 80 feet. GPS or RNP-0.3 required. DME/DME RNP-0.3 NA. Procedure NA at night.</p>	<p>MISSED APPROACH: Climb to 5200 direct NULIC WP and hold.</p>	
	<p>AWOS-3 124.175</p>	<p>KANSAS CITY CENTER 125.2 269.4</p>



NC-2, 22 OCT 2009 to 19 NOV 2009

NC-2, 22 OCT 2009 to 19 NOV 2009



4 NM Holding Pattern	FARPA	CULVA	RW17	
*VDP NA with ULYSSES altimeter setting.		5200	NULIC	
5200 ← 349°	→ 169°	→ 169°	*1.2 NM to RW17	
VGS1 and descent angles not coincident.		4900	3.04° TCH 45	
	6 NM	3.6 NM	1.2	
CATEGORY	A	B	C	D
LNAV MDA	3720-1 396 (400-1)			3720-1¼ 396 (400-1¼)
CIRCLING	3760-1 436 (500-1)	3840-1 516 (600-1)	3840-1½ 516 (600-1½)	3880-2 556 (600-2)

JOHNSON, KANSAS
Orig 08045

JOHNSON/ STANTON COUNTY MUNI (2K3)
37°35' N-101°44' W
RNAV (GPS) RWY 17