

RNAV (GPS) RWY 19

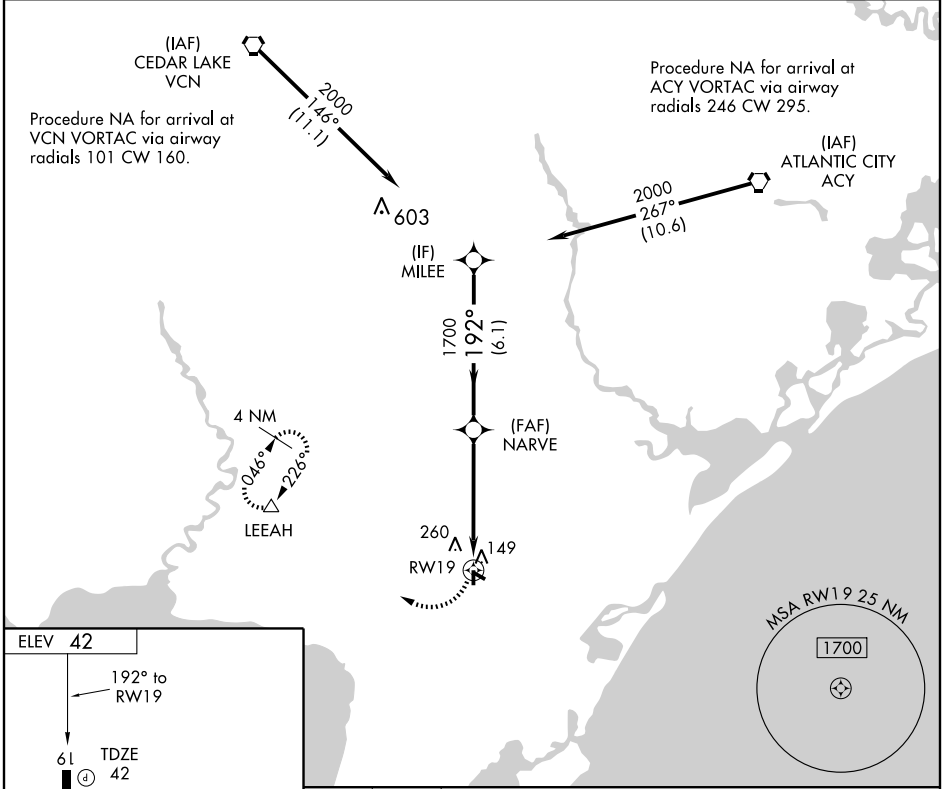
WOODBINE MUNI (OBI)

APP CRS	Rwy Idg	3304
192°	TDZE	42
	Apt Elev	42

▽ DME/DME RNP-0.3 NA. When local altimeter setting not received, use Millville Muni altimeter setting; increase all MDA 60 feet, and increase LNAV Cat. C visibility ½ mile. VDP NA when using Millville Muni altimeter setting.

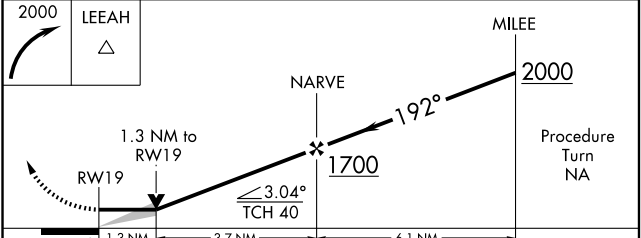
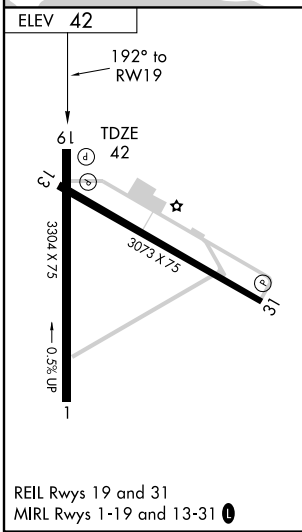
MISSED APPROACH:
Climbing right turn to 2000 direct LEEAH and hold.

AWOS-3 120.475	ATLANTIC CITY APP CON 124.6 327.125	GCO 121.725	UNICOM 123.05 (CTAF) 0
--------------------------	---	-----------------------	----------------------------------



NE-2, 22 OCT 2009 to 19 NOV 2009

NE-2, 22 OCT 2009 to 19 NOV 2009



CATEGORY	A	B	C	D
LNAV MDA	500-1	458 (500-1)	500-1¼ 458 (500-1¼)	NA
CIRCLING	620-1	578 (600-1)	620-1½ 578 (600-1½)	NA