

# RNAV (GPS) RWY 1

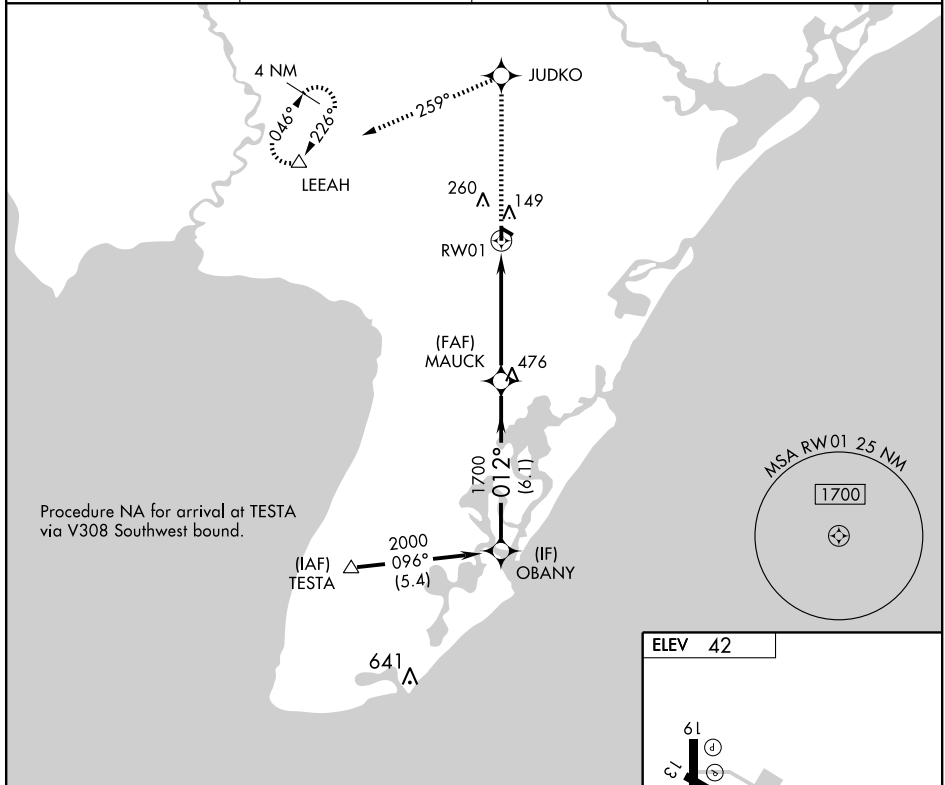
WOODBINE MUNI (OBI)

APP CRS	Rwy Idg	<b>3304</b>
<b>012°</b>	TDZE	<b>41</b>
	Apt Elev	<b>42</b>

**▽** DME/DME RNP-0.3 NA. When local altimeter setting not received, use Millville Muni altimeter setting and increase all MDA 60 feet, and increase LNAV and Circling Cat. C visibility ¼ mile. VDP NA when using Millville Muni altimeter setting.

**MISSED APPROACH:** Climb to 2000 direct JUDKO and via track 259° to LEEAH and hold.

AWOS-3 <b>120.475</b>	ATLANTIC CITY APP CON <b>124.6 327.125</b>	GCO <b>121.725</b>	UNICOM <b>123.05 (CTAF) 0</b>
--------------------------	---	-----------------------	----------------------------------



NE-2, 22 OCT 2009 to 19 NOV 2009

NE-2, 22 OCT 2009 to 19 NOV 2009

	OBANY	MAUCK	JUDKO	LEEAH
	2000	1700	260	149
	012°	3.04°	TRK 259°	△
Procedure Turn NA	6.1 NM	4 NM	1 NM	
CATEGORY	A	B	C	D
LNAV MDA	400-1 359 (400-1)			NA
CIRCLING	620-1	578 (600-1)	620-1½ 578 (600-1½)	NA

