

ST. JOHNS, ARIZONA

AL-6586 (FAA)

VORTAC SJN <b>112.3</b> Chan <b>70</b>	APP CRS <b>283°</b>	Rwy Idg TDZE Apt Elev	<b>N/A</b> <b>N/A</b> <b>5737</b>
--	------------------------	-----------------------------	---

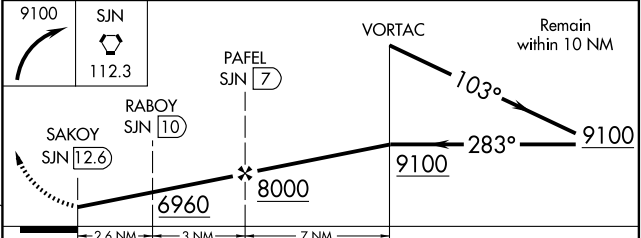
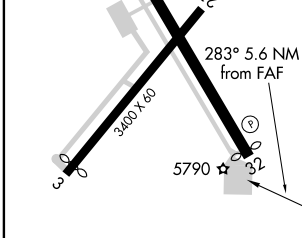
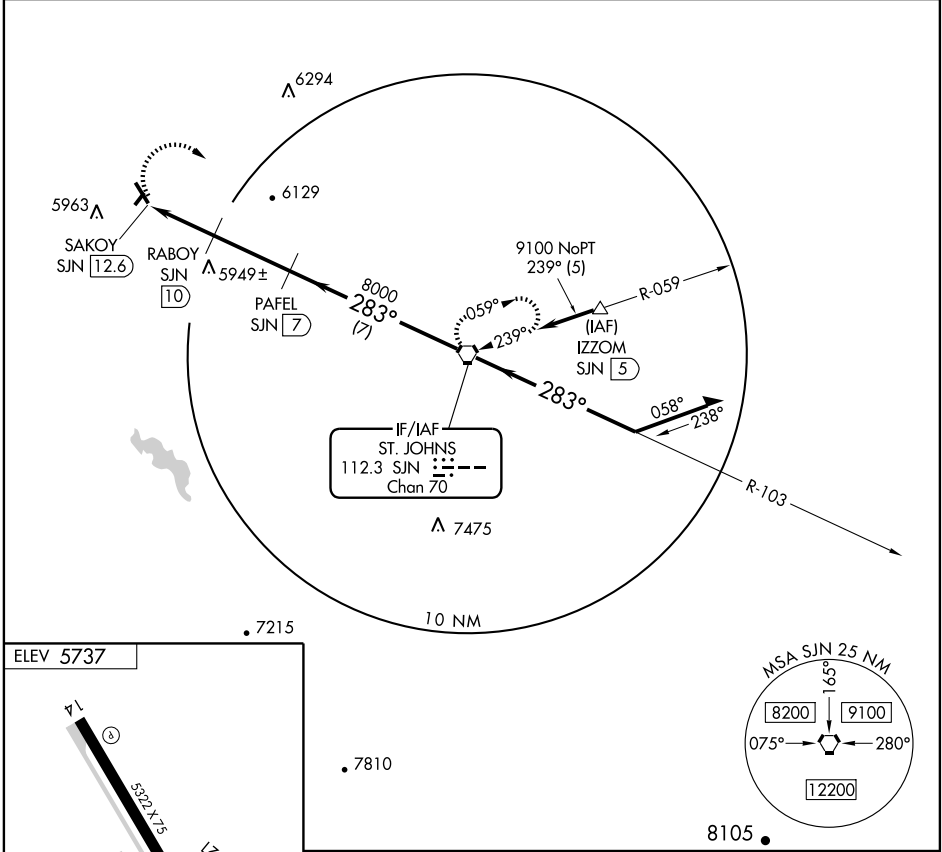
# VOR/DME-A

ST. JOHNS INDUSTRIAL AIR PARK (SJN)

**⚠** When local altimeter setting not received, use Show Low altimeter setting and increase all MDAs 180 feet.

**⚠** MISSED APPROACH: Climbing right turn to 9100 direct SJN VORTAC and hold, continue climb-in-hold to 9100.

ASOS <b>134.225</b>	ALBUQUERQUE CENTER <b>124.325 288.25</b>	UNICOM <b>122.8 (CTAF)</b>
------------------------	---	-------------------------------



REIL Rwy 14 and 32 MIRL Rwy 3-21 and 14-32	<table border="1"> <tr> <td>CATEGORY</td> <td>A</td> <td>B</td> <td>C</td> <td>D</td> </tr> <tr> <td>CIRCLING</td> <td>6240-1 503 (600-1)</td> <td>6280-1 543 (600-1)</td> <td colspan="2">NA</td> </tr> </table>	CATEGORY	A	B	C	D	CIRCLING	6240-1 503 (600-1)	6280-1 543 (600-1)	NA	
CATEGORY	A	B	C	D							
CIRCLING	6240-1 503 (600-1)	6280-1 543 (600-1)	NA								

ST. JOHNS, ARIZONA  
Amdt 2 09015

34°31'N-109°23'W

ST. JOHNS INDUSTRIAL AIR PARK (SJN)  
**VOR/DME-A**

SW-4, 22 OCT 2009 to 19 NOV 2009

SW-4, 22 OCT 2009 to 19 NOV 2009