

ST. JOHNS, ARIZONA

AL-6586 (FAA)

RNAV (GPS) RWY 14

ST. JOHNS INDUSTRIAL AIR PARK (SJJN)

APP CRS
136°

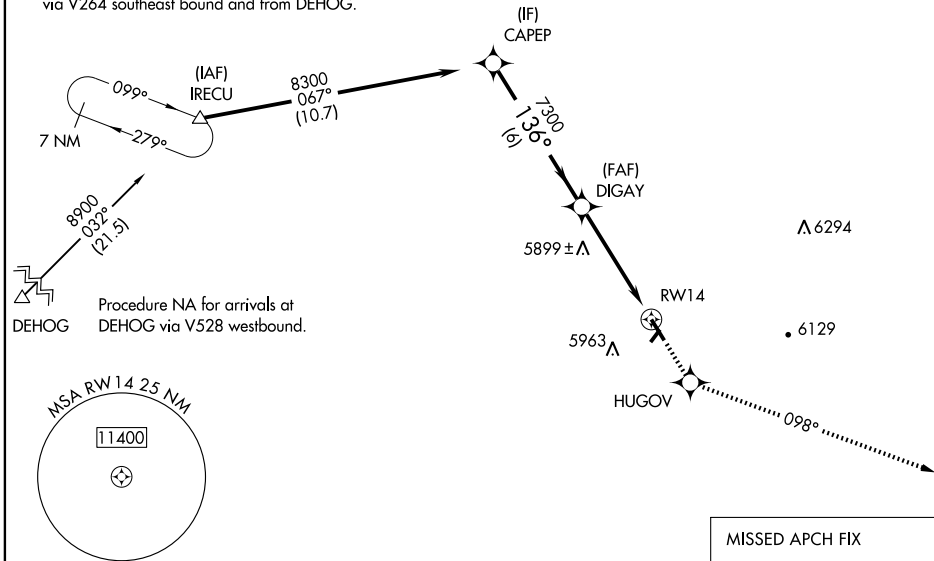
Rwy Idg **5322**
TDZE **5736**
Apt Elev **5737**

▽ DME/DME RNP-0.3 NA.
▲ When local altimeter setting not received, use Show Low altimeter setting and increase all MDAs 180 feet.
VDP NA when using Show Low altimeter setting.

MISSED APPROACH: Climb to 9000 direct HUGOV and via 098° track to SJJN VORTAC and hold, continue climb-in-hold to 9000.

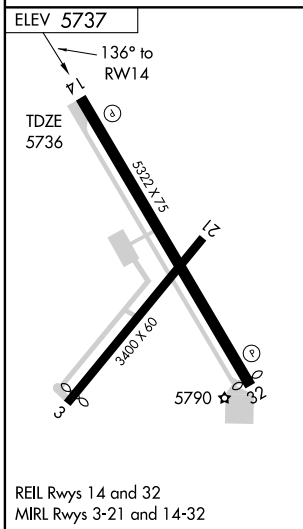
ASOS 134.225	ALBUQUERQUE CENTER 124.325 288.25	UNICOM 122.8 (CTAF)
------------------------	---	-------------------------------

Holding not required for arrivals at IRECU via V264 southeast bound and from DEHOG.



SW-4, 22 OCT 2009 to 19 NOV 2009

SW-4, 22 OCT 2009 to 19 NOV 2009



REIL Rws 14 and 32
MIRL Rws 3-21 and 14-32

VGSI and descent angles not coincident.

CAPEP	DIGAY	9000	HUGOV	098° track	SJJN
8300	7300				
Procedure Turn NA			1.2 NM to RWY 14		
			3.04° TCH 40		
	6 NM	3.5 NM	1.2		
CATEGORY	A	B	C	D	
LNAV MDA	6160-1	424 (500-1)		NA	
CIRCLING	6240-1 503 (600-1)	6280-1 543 (600-1)		NA	

ST. JOHNS, ARIZONA
Orig 09015

34°31'N-109°23'W

RNAV (GPS) RWY 14