

CABOOL, MISSOURI

AL-6584 (FAA)

VORTAC MAP <b>113.4</b> Chan <b>81</b>	APP CRS <b>201°</b>	Rwy Idg TDZE <b>1217</b> Apt Elev <b>1220</b>	<b>3002</b>
--	------------------------	---	-------------

# VOR/DME RWY 21

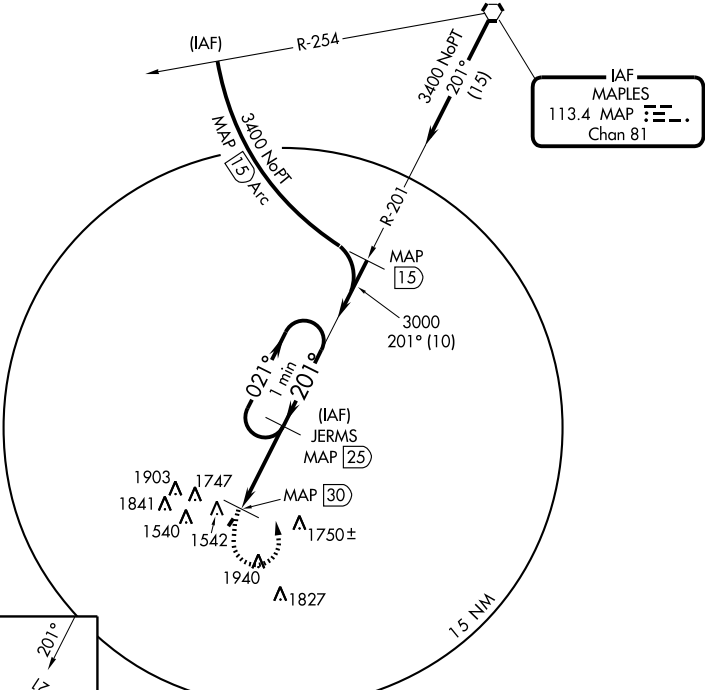
CABOOL MEMORIAL (TVB)

**NA** Use Ft. Leonard Wood, Forney AAF altimeter setting; if not received use Springfield altimeter setting. Fly visual to airport.

MISSED APPROACH: Climbing left turn to 3000 via MAP R-201 to JERMS 25 DME and hold.

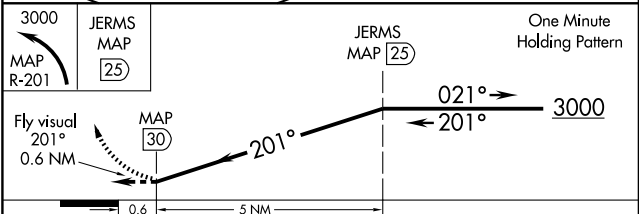
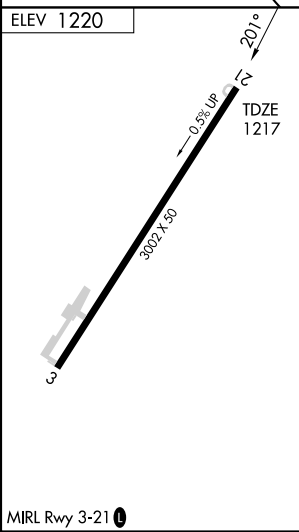
KANSAS CITY CENTER  
**128.35 284.67**

CTAF  
**122.9**



NC-3, 22 OCT 2009 to 19 NOV 2009

NC-3, 22 OCT 2009 to 19 NOV 2009



CATEGORY	A	B	C	D
S-21	2160-1¼	943 (1000-1¼)	2160-2¾ 943 (1000-2¾)	NA
CIRCLING	2160-1¼	943 (1000-1¼)	2160-2¾ 943 (1000-2¾)	NA
SPRINGFIELD ALTIMETER SETTING MINIMUMS				
S-21	2300-1¼ 1083 (1100-1¼)	2300-1½ 1083 (1100-1½)	2300-3 1083 (1100-3)	NA
CIRCLING	2300-1¼ 1083 (1100-1¼)	2300-1½ 1083 (1100-1½)	2300-3 1083 (1100-3)	NA

CABOOL, MISSOURI  
Amdt 2 09071

37°08'N-92°05'W

# CABOOL MEMORIAL (TVB) VOR/DME RWY 21