

# RNAV (GPS) RWY 19

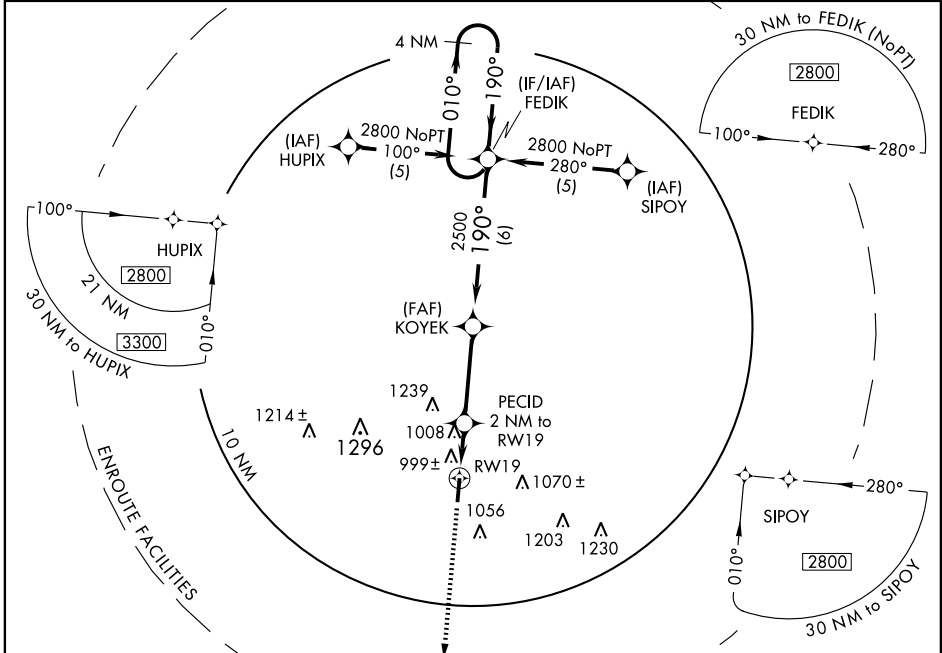
JACKSON/ JAMES A. RHODES (I43)

APP CRS <b>190°</b>	Rwy ldg <b>5201</b>
	TDZE <b>726</b>
	Apt Elev <b>726</b>

**NA** DME/DME RNP-0.3 NA. When local altimeter setting not received, use Greater Portsmouth altimeter setting and increase all MDAs 60 feet, increase Circling Cat B/C/D visibilities ¼ mile.

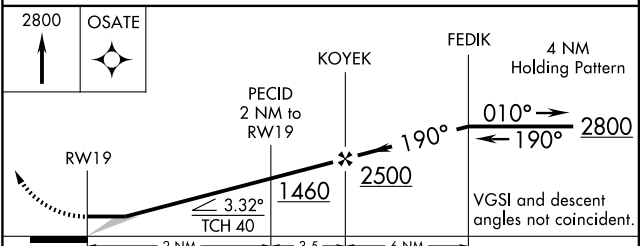
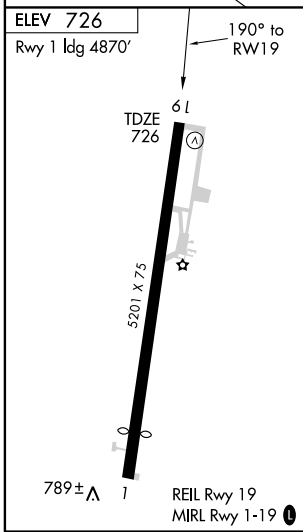
**MISSED APPROACH:** Climb to 2800 direct OSATE WP and hold.

AWOS-3 <b>118.825</b>	HUNTINGTON APP CON <b>128.4 270.1</b>	UNICOM <b>122.7 (CTAF) 0</b>
--------------------------	--	---------------------------------



EC-2, 22 OCT 2009 to 19 NOV 2009

EC-2, 22 OCT 2009 to 19 NOV 2009



CATEGORY	A	B	C	D
LNAV MDA	1260-1	534 (600-1)	1260-1½ 534 (600-1½)	1260-1¾ 534 (600-1¾)
CIRCLING	1300-1 574 (600-1)	1420-1 694 (700-1)	1420-2 694 (700-2)	1420-2¼ 694 (700-2¼)

# RNAV (GPS) RWY 19