

RNAV (GPS) Y RWY 36

CHEROKEE COUNTY RGNL (CKP)

APP CRS	Rwy Idg	3801
358°	TDZE	1227
	Apt Elev	1227

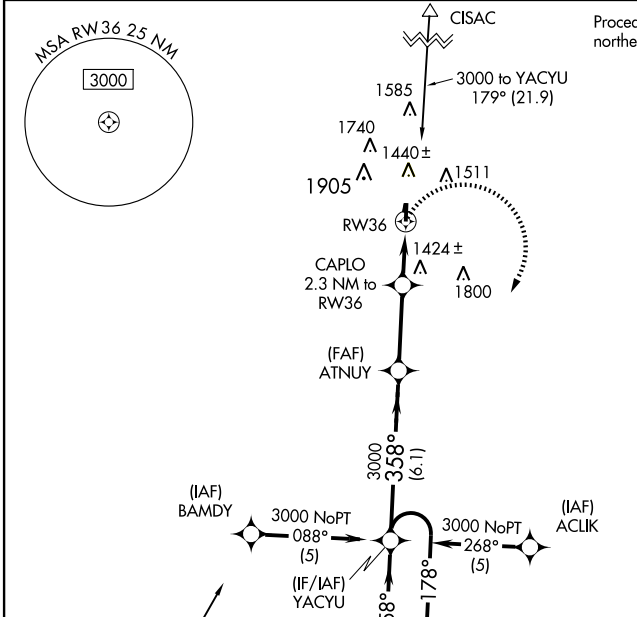
⚠ DME/DME RNP-0.3 NA. Visibility reduction by helicopters NA. Circling to Rwy 1-19 NA. Circling NA at night.
⚠ When local altimeter setting not received, use Storm Lake altimeter setting and increase all MDA 80 feet.
 VDP NA when using Storm Lake altimeter setting.

MISSED APPROACH: Climbing right turn to 3000 direct YACYU and hold.

AWOS-3
119.225

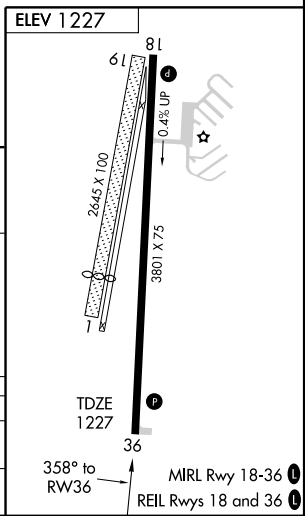
MINNEAPOLIS CENTER
124.1 269.0

UNICOM
122.8 (CTAF) 0



NC-3, 22 OCT 2009 to 19 NOV 2009

NC-3, 22 OCT 2009 to 19 NOV 2009



4 NM Holding Pattern	YACYU	ATNUY	3000	YACYU
	← 178°	→ 358°	→ 3000	✦
VGSJ and descent angles not coincident 6.1 NM 3.1 NM 1.2 NM 1.1 NM				
CATEGORY	A	B	C	D
RNAV MDA	1680-1	453 (500-1)	NA	
CIRCLING	1800-1	573 (600-1)	NA	