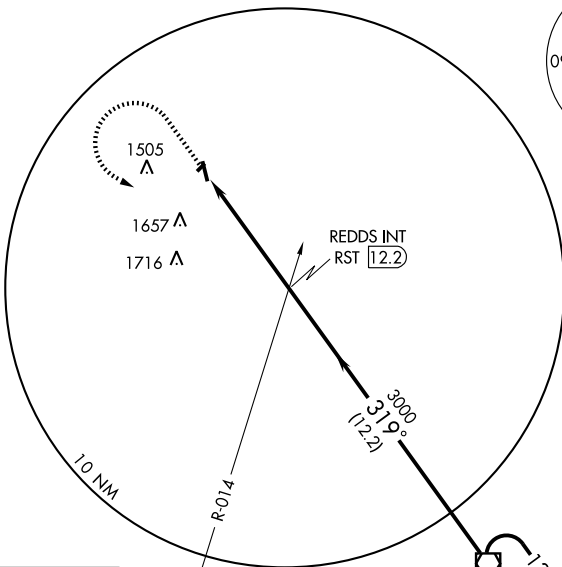
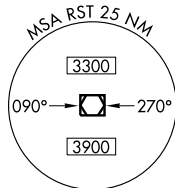


VOR-A
DODGE CENTER (TOB)

VOR/DME RST 112.0 Chan 57	APP CRS 319°	Rwy Idg TDZE Apt Elev 1305	N/A N/A 1305
---	------------------------	--	---

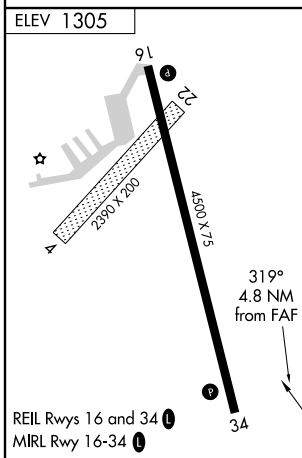
▽ When local altimeter setting not received, use Rochester Intl altimeter setting and increase all MDA 40 feet. **MISSED APPROACH:** Climb to 2500 then climbing left turn to 3000 via RST VOR/DME R-319 to RST VOR/DME and hold.

AWOS-3 119,075	ROCHESTER APP CON * 119.8 251.125	CTAF 122.9
--------------------------	---	----------------------



NC-1, 22 OCT 2009 to 19 NOV 2009

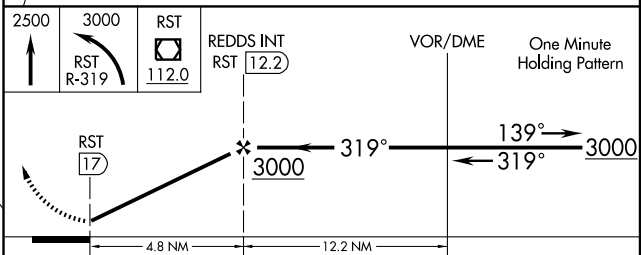
NC-1, 22 OCT 2009 to 19 NOV 2009



IF/IAF
ROCHESTER
112.0 RST
Chan 57

NoPT for arrivals on RST VOR/DME airway radials 076 CW 213.

▲1868



FAF to MAP 4.8 NM						
Knots	60	90	120	150	180	
Min:Sec	4:48	3:12	2:24	1:55	1:36	
CATEGORY	A		B		C	D
CIRCLING	1960-1 655 (700-1)		1980-1 675 (700-1)		2000-2 695 (700-2)	NA