

# RNAV (GPS) RWY 34

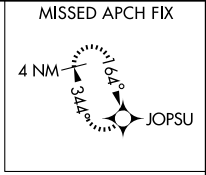
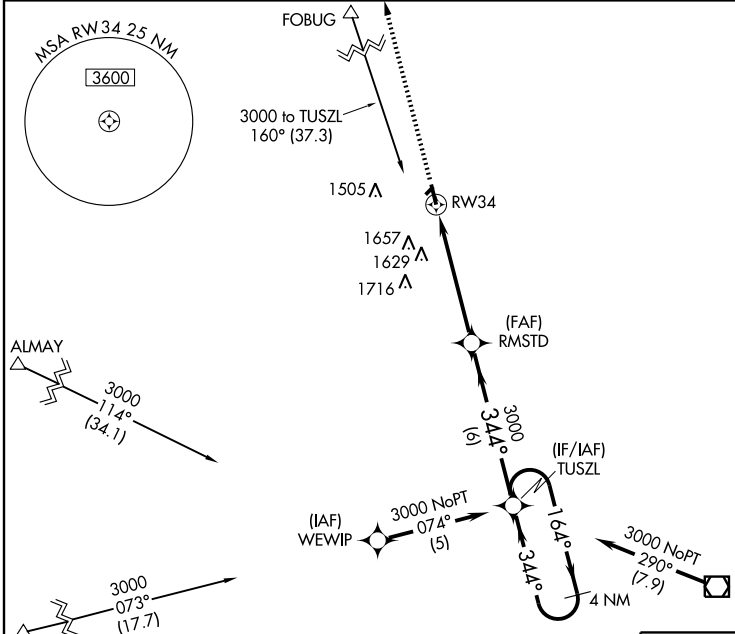
DODGE CENTER (TOB)

APP CRS <b>344°</b>	Rwy Idg <b>4500</b>
	TDZE <b>1305</b>
	Apt Elev <b>1305</b>

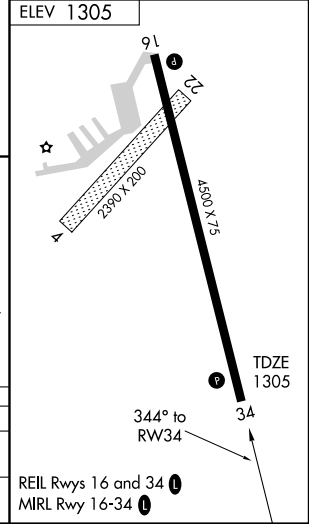
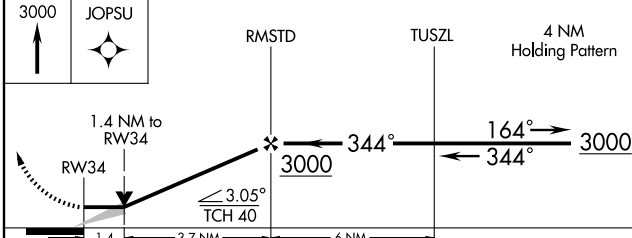
**⚠** DME/DME RNP-0.3 NA.  
**⚠** When local altimeter setting not received, use Rochester Intl altimeter setting and increase all MDA 40 feet, LNAV Cat C visibility ½ mile. VDP NA with Rochester Intl altimeter setting.

**MISSED APPROACH:** Climb to 3000 direct JOPSU and hold.

AWOS-3 <b>119.075</b>	ROCHESTER APP CON * <b>119.8 251.125</b>	CTAF <b>122.9</b>
--------------------------	---------------------------------------------	----------------------



Procedure NA for arrivals at RST VOR/DME via V411 southeastbound and arrivals at ALMAY via V505 northbound.



CATEGORY	A	B	C	D
LNAV MDA	1780-1	475 (500-1)	1780-1½ 475 (500-1½)	NA
CIRCLING	1960-1 655 (700-1)	1980-1 675 (700-1)	2000-2 695 (700-2)	NA

NC-1, 22 OCT 2009 to 19 NOV 2009

NC-1, 22 OCT 2009 to 19 NOV 2009