

RNAV (GPS) RWY 16

DODGE CENTER (TOB)

APP CRS 164°	Rwy Idg 4500
	TDZE 1295
	Apt Elev 1305

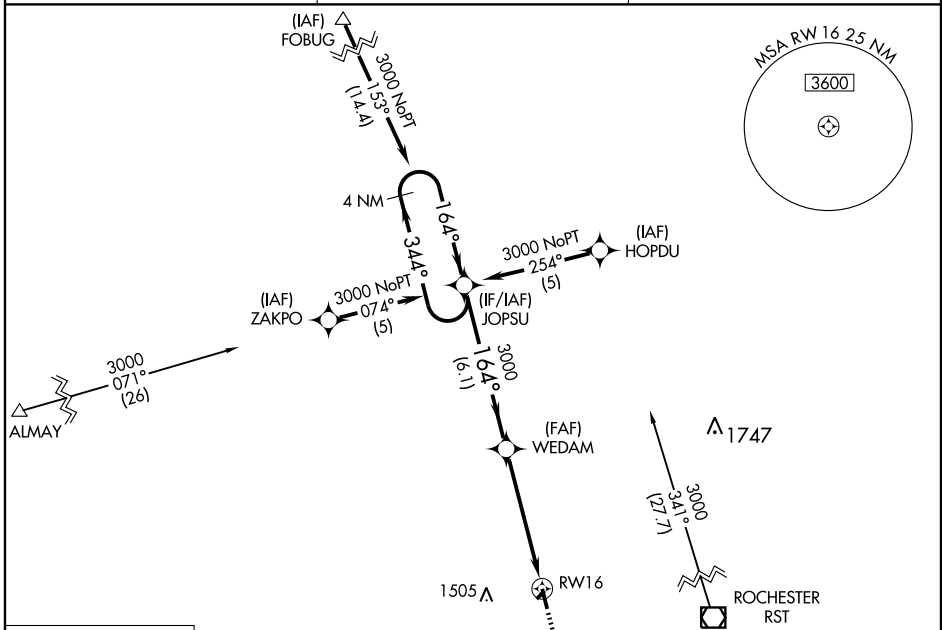
▽ DME/DME RNP-0.3 NA.
▲ VDP NA with Rochester Intl altimeter setting.
 When local altimeter setting not received, use Rochester Intl altimeter setting and increase all MDA 40 feet.

MISSED APPROACH: Climb to 3000 direct TUSZL and hold.

AWOS-3
119.075

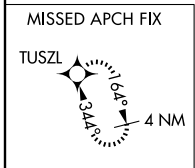
ROCHESTER APP CON *
119.8 251.125

CTAF
122.9

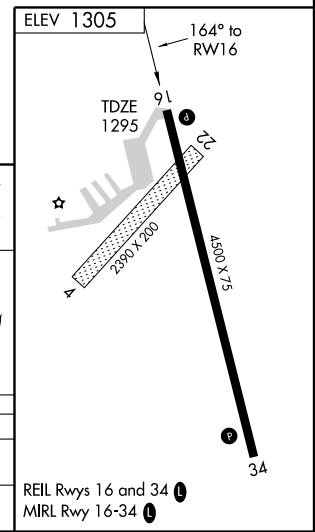
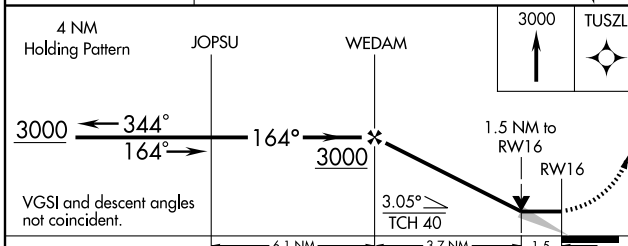


NC-1, 22 OCT 2009 to 19 NOV 2009

NC-1, 22 OCT 2009 to 19 NOV 2009



Procedure NA for arrivals at RST VOR/DME via V411 southeastbound.



CATEGORY	A	B	C	D
LNVA MDA	1800-1	505 (500-1)	1800-1½ 505 (500-1½)	NA
CIRCLING	1960-1 655 (700-1)	1980-1 675 (700-1)	2000-2 695 (700-2)	NA