

# RNAV (GPS) RWY 32

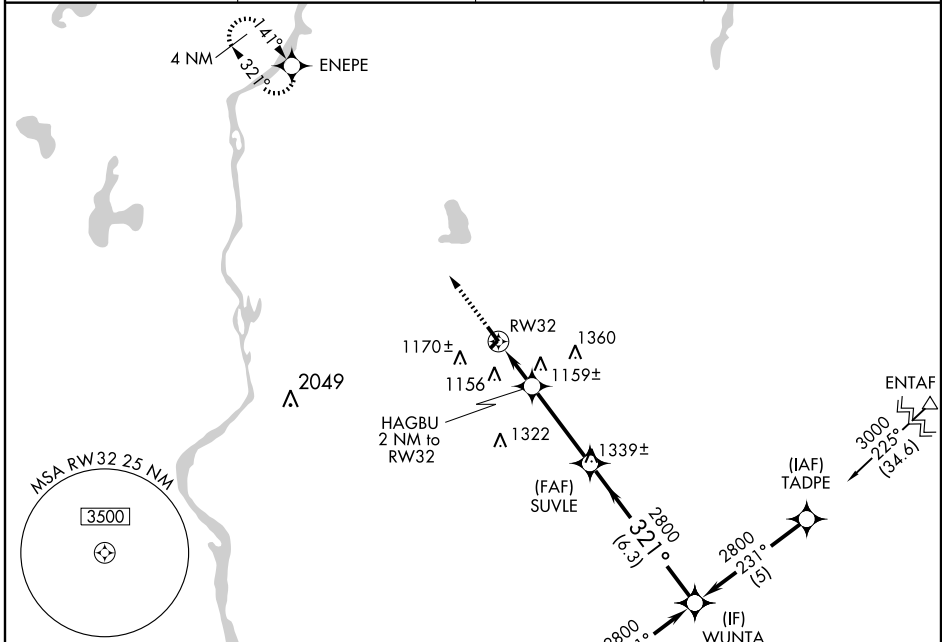
NEW RICHMOND RGNL (R.N.H)

APP CRS <b>321°</b>	Rwy Idg <b>5507</b>
	TDZE <b>996</b>
	Apt Elev <b>997</b>

**⚠** DME/DME RNP-0.3 NA. When local altimeter setting not received, use Osceola altimeter setting and increase all MDAs 40 feet and Cat D LNAV visibility ¼ mile.

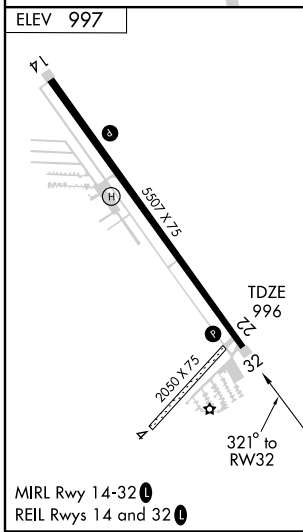
**MISSED APPROACH:** Climb to 2700 direct ENEPE and hold.

AWOS-3 <b>120.0</b>	MINNEAPOLIS APP CON <b>121.2 357.4</b>	GCO <b>121.725</b>	UNICOM <b>122.975 (CTAF) 0</b>
------------------------	---	-----------------------	-----------------------------------



EC-3, 22 OCT 2009 to 19 NOV 2009

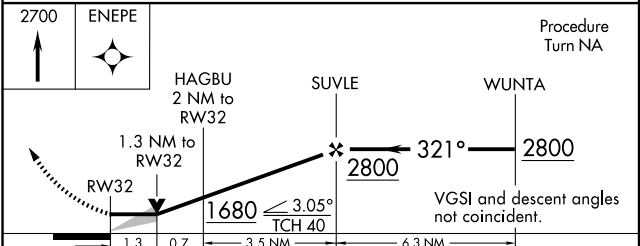
EC-3, 22 OCT 2009 to 19 NOV 2009



**ELEV 997**

FARMINGTON FGT 3000 -057° (35.9)

Procedure NA for arrivals on FGT VORTAC airway radials 357 CW 117.



	A	B	C	D
CATEGORY	A	B	C	D
LNAV MDA	1420-1	424 (500-1)	1420-1¼	424 (500-1¼)
CIRCLING	1520-1	523 (600-1)	1520-1½ 523 (600-1½)	1560-2 563 (600-2)