

RNAV (GPS) RWY 13

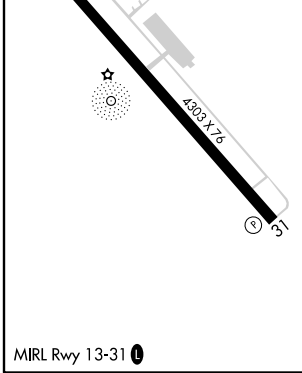
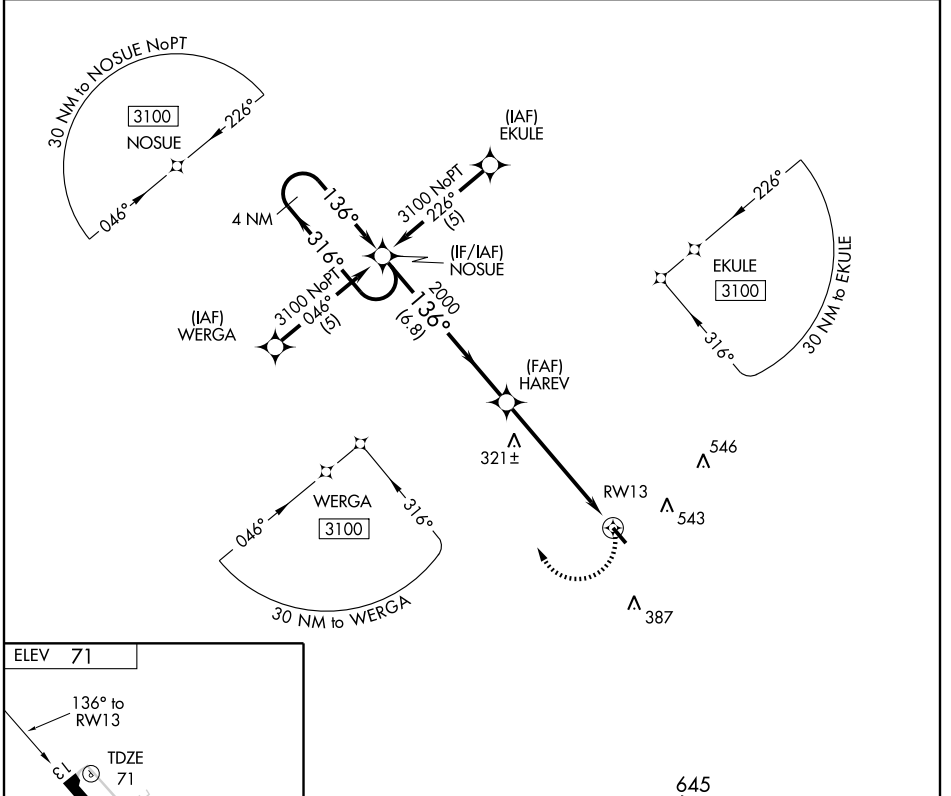
KOUNTZE/SILSBEE/ HAWTHORNE FIELD (45R)

APP CRS 136°	Rwy Idg 4303
	TDZE 71
	Apt Elev 71

▼ Use Southeast Texas Rgnl altimeter setting; when not received, use Orange altimeter setting. Visibility reduction by helicopters NA.
▲ NA DME/DME RNP-0.3 NA.

MISSED APPROACH: Climbing right turn to 3100 direct NOSUE and hold.

HOUSTON APP CON 121.3 377.1	UNICOM 122.8 (CTAF) 0
---------------------------------------	---------------------------------



4 NM Holding Pattern NOSUE		3100	NOSUE
3100 ← 316°		→ 136°	
VGSi and descent angles not coincident.		HAREV	RWY 13
		2000	3.05° TCH 40
		6.8 NM	5.8 NM
CATEGORY	A	B	C
LNAV MDA	700-1	629 (700-1)	700-1¾ 629 (700-1¾)
CIRCLING	700-1	629 (700-1)	700-1¾ 629 (700-1¾)
			D
			NA

SC-5, 22 OCT 2009 to 19 NOV 2009

SC-5, 22 OCT 2009 to 19 NOV 2009