

NDB RWY 13

KOUNTZE/SILSBEE/ HAWTHORNE FIELD (45R)

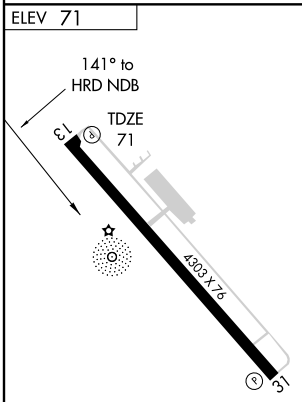
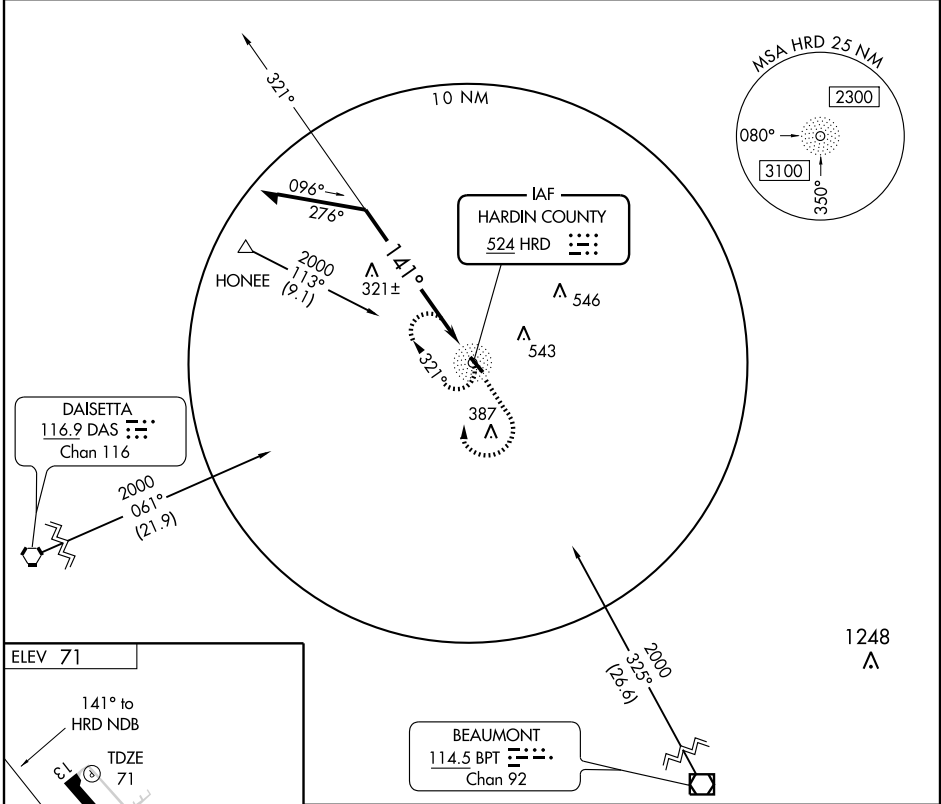
NDB HRD 524	APP CRS 141°	Rwy Idg TDZE Apt Elev	4303 71 71
-----------------------	------------------------	-----------------------------	---------------------------------------

▽ Use Southeast Texas Rgnl altimeter setting; when not received,
▲ NA use Orange altimeter setting. Visibility reduction by helicopters NA.

MISSED APPROACH: Climb to 2000 then right turn direct HRD NDB and hold.

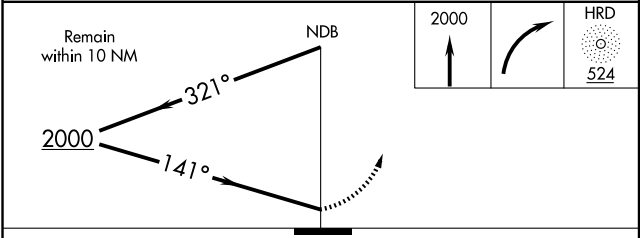
HOUSTON APP CON
121.3 377.1

UNICOM
122.8 (CTAF) 0



MIRL Rwy 13-31 **0**

Knots	60	90	120	150	180
Min:Sec					



CATEGORY	A	B	C	D
S-13	800-1	729 (800-1)	800-2 729 (800-2)	NA
CIRCLING	800-1	729 (800-1)	800-2 729 (800-2)	NA

NDB RWY 13

SC-5, 22 OCT 2009 to 19 NOV 2009

SC-5, 22 OCT 2009 to 19 NOV 2009