

NAVASOTA, TEXAS

AL-6576 (FAA)

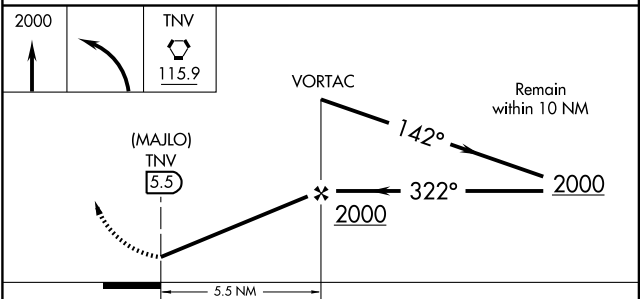
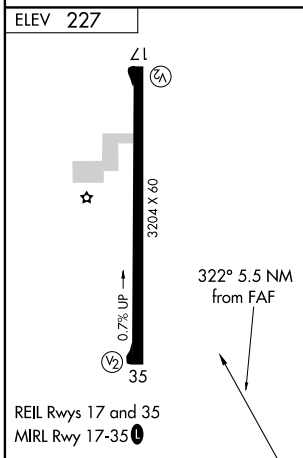
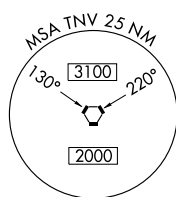
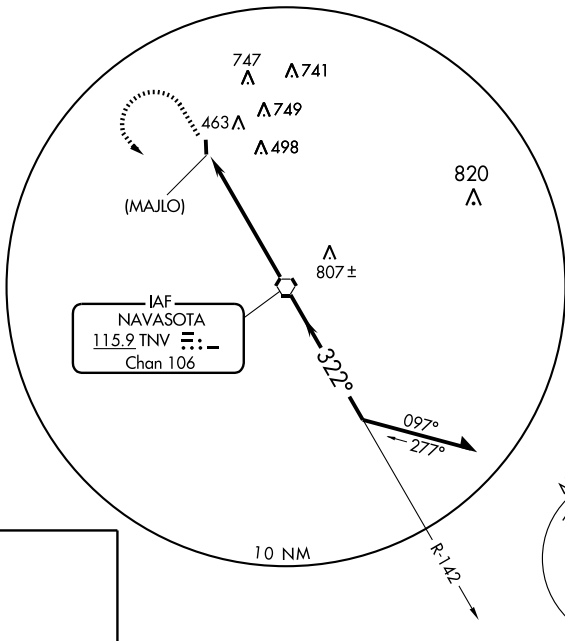
# VOR or GPS-A NAVASOTA MUNI (60R)

VOR TNV <b>115.9</b> Chan <b>106</b>	APP CRS <b>322°</b>	Rwy Idg TDZE Apt Elev	<b>N/A</b> <b>N/A</b> <b>227</b>
--	------------------------	-----------------------------	--

**▼** Use College Station, TX altimeter setting.  
**▲** NA

MISSED APPROACH: Climb to 2000, then left turn direct TNV VORTAC.

HOUSTON CENTER <b>120.4 371.9</b>	CTAF <b>122.9</b>	<b>123.3 0</b>
--------------------------------------	-------------------	----------------



FAF to MAP 5.5 NM						
Knots	60	90	120	150	180	
Min:Sec	5:30	3:40	2:45	2:12	1:50	
CATEGORY	A		B		C	D
CIRCLING	820-1		593 (600-1)		820-1½ 593 (600-1½)	NA

NAVASOTA, TEXAS  
Amdt 1A 02108

30°22'N-96°07'W

# NAVASOTA MUNI (60R) VOR or GPS-A

SC-5, 22 OCT 2009 to 19 NOV 2009

SC-5, 22 OCT 2009 to 19 NOV 2009