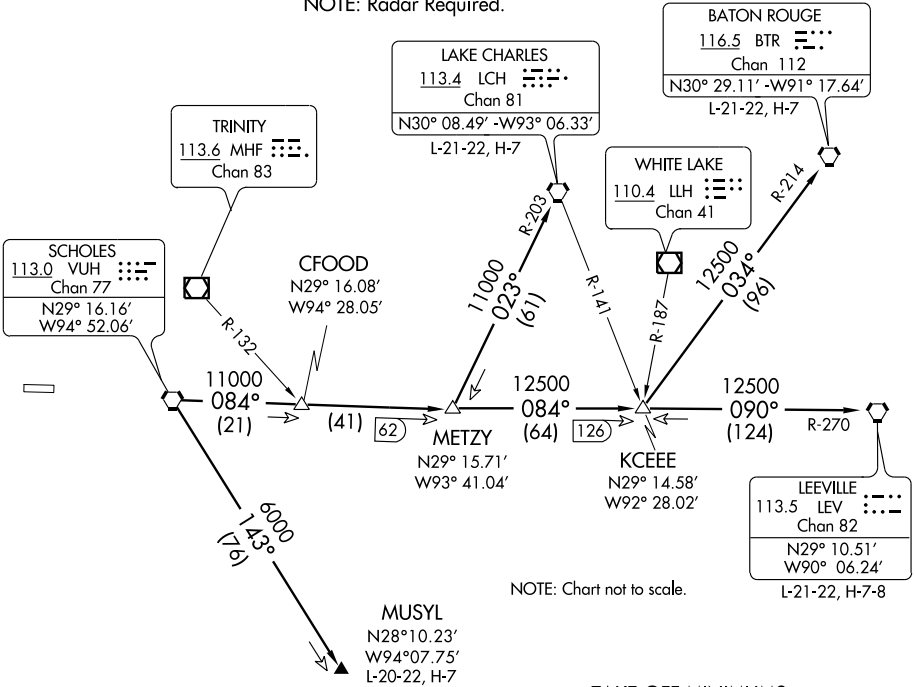


HOUSTON DEP CON
123.8 257.7
CTAF 123.0

NOTE: LCH, BTR, and LEV transitions are ATC assigned only, do not file.
NOTE: For LCH, BTR, LEV transitions, this procedure requires over water flight not to exceed 35 miles from nearest shoreline.
NOTE: Radar Required.



NOTE: Chart not to scale.

TAKE-OFF MINIMUMS:
Rwy 9, 27 standard.

(TAKE-OFF NOTES ON FOLLOWING PAGE)

SC-5, 22 OCT 2009 to 19 NOV 2009

SC-5, 22 OCT 2009 to 19 NOV 2009

DEPARTURE ROUTE DESCRIPTION

When entering controlled airspace, fly assigned heading for vectors to VUH VORTAC, maintain 4000', expect filed altitude 10 minutes after departure.

BATON ROUGE TRANSITION (VUH3.BTR): From over VUH VORTAC via VUH R-084 to KCEEE INT, then via BTR R-214 to BTR VORTAC.

LAKE CHARLES TRANSITION (VUH3.LCH): From over VUH VORTAC via VUH R-084 to METZZY INT, then via LCH R-203 to LCH VORTAC.

LEEVILLE TRANSITION (VUH3.LEV): From over VUH VORTAC via VUH R-084 to KCEEE INT, then via LEV R-270 to LEV VORTAC.

MUSYL TRANSITION (VUH3.MUSYL): From over VUH VORTAC via VUH R-143 to MUSYL.