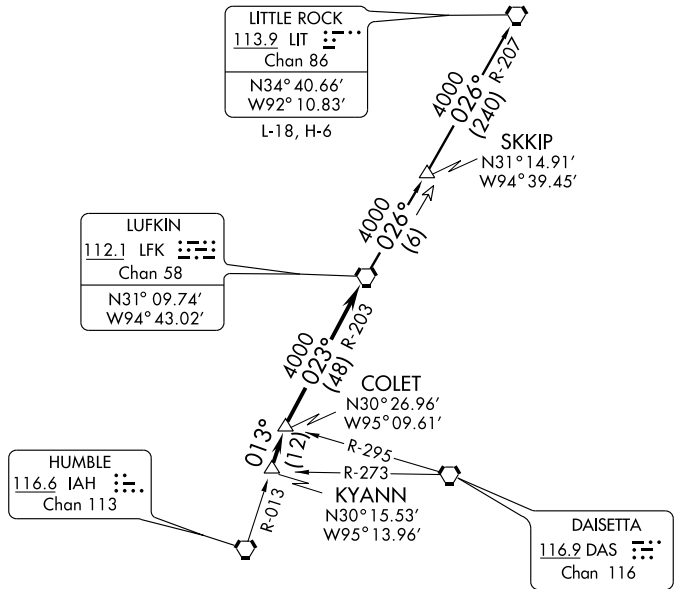


CLNC DEL
120.8
HOUSTON DEP CON
123.8 257.7
CTAF
123.0



TAKE-OFF MINIMUMS:

Rwy 9, 27, standard.

TAKE-OFF OBSTACLES:

Rwy 9, Multiple hangars beginning 239' from DER, 360' right of centerline, up to 42' AGL/106' MSL. Multiple trees beginning 501' from DER, 355' right of centerline, up to 43' AGL/111' MSL. Multiple hangars beginning 119' from DER, 498' left of centerline, up to 41' AGL/105' MSL. Pole 332' from DER, 299' left of centerline, 43' AGL/97' MSL. Antenna 1172' from DER, 658' left of centerline, 51' AGL/115' MSL. Multiple trees beginning 558' from DER, 68' left of centerline, up to 58' AGL/122' MSL.

Rwy 27, Multiple trees beginning 1050' from DER, 40' left of centerline, up to 71' AGL/140' MSL. Vehicle and road 99' from DER, 291' right of centerline, 15 AGL/83' MSL. Multiple trees beginning 873' from DER, 514' right of centerline, up to 59' AGL/130' MSL. Multiple transmission poles beginning 1304' from DER, 131' right of centerline, up to 41' AGL/110' MSL.

NOTE: Radar Required.

NOTE: For aircraft destined LIT, or overflying LIT or PXV.

NOTE: Chart not to scale.



DEPARTURE ROUTE DESCRIPTION

When entering controlled airspace, fly assigned heading for vectors to KYANN INT, maintain 4000', expect filed altitude 10 minutes after departure. Thence . . .

. . . via IAH R-013 to COLET INT, then right turn via LFK R-203 to LFK VORTAC.

LITTLE ROCK TRANSITION (LFK5.LIT): From over LFK VORTAC via LFK R-026 to SSKIP INT, then via LIT R-207 to LIT VORTAC.

SC-5, 22 OCT 2009 to 19 NOV 2009

SC-5, 22 OCT 2009 to 19 NOV 2009