

HOUSTON, TEXAS

AL-6575 (FAA)

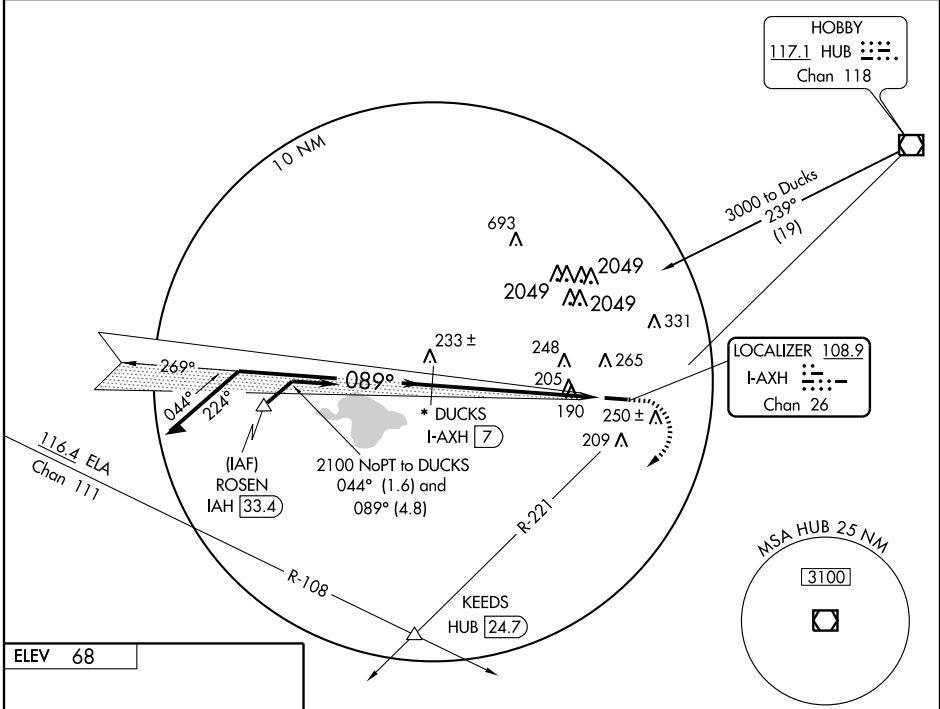
LOC I-AXH 108.9 Chan 26	APP CRS 089°	Rwy Idg TDZE 68 Apt Elev 68	5003
---	------------------------	---	-------------

LOC/DME RWY 9

HOUSTON-SOUTHWEST (AXH)

▼ Obtain local altimeter setting on CTAF; when not received use William P. Hobby altimeter setting and increase all MDA's 40 ft.
▲ NA MISSED APPROACH: Climb to 500, then climbing right turn to 2500 via HUB R-221 to KEEDS Int.

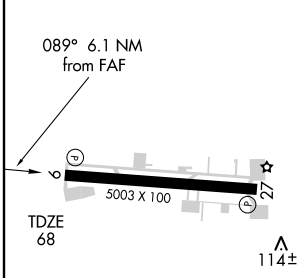
AWOS-3 123.625	HOUSTON APP CON 123.8 257.7	CLNC DEL 120.8	UNICOM 123.0 (CTAF)
--------------------------	---------------------------------------	--------------------------	-------------------------------



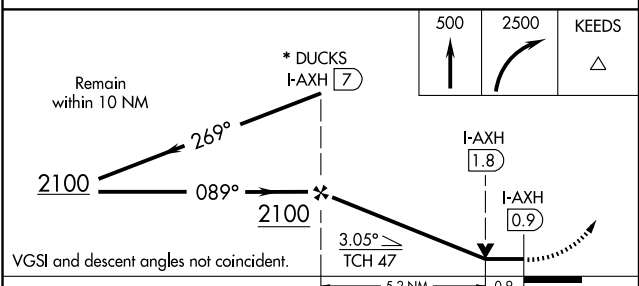
SC-5, 22 OCT 2009 to 19 NOV 2009

SC-5, 22 OCT 2009 to 19 NOV 2009

ELEV 68



* Maintain 3000 feet or above until established outbound for procedure turn.



CATEGORY	A	B	C	D
S-9	480-1	412 (500-1)	480-1¼ 412 (500-1¼)	NA
CIRCLING	620-1	552 (600-1)	620-1½ 552 (600-1½)	NA

REIL Rwy 9-27
MIRL Rwy 9-27

HOUSTON, TEXAS
Amdt 3A 09183

29° 30' N-95° 29' W

HOUSTON-SOUTHWEST (AXH) LOC/DME RWY 9