

VORTAC ARG <b>114.5</b> Chan <b>92</b>	APP CRS <b>036°</b>	Rwy Idg TDZE Apt Elev <b>N/A</b> <b>N/A</b> <b>293</b>
--	------------------------	---

**VOR/DME-A**  
CORNING MUNI (4M9)

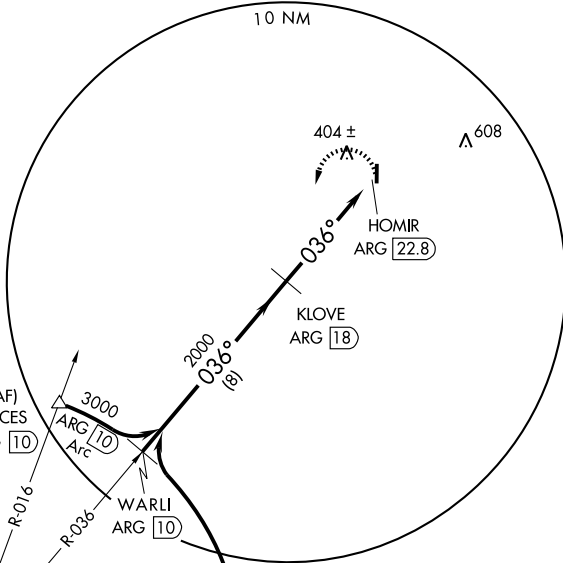
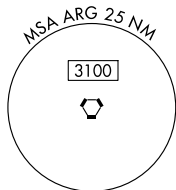
**▲** NA Use Walnut Ridge Rgnl altimeter setting.

MISSED APPROACH: Climbing left turn to 3000 direct ARG VORTAC and hold.

AWOS-3  
**118.325**

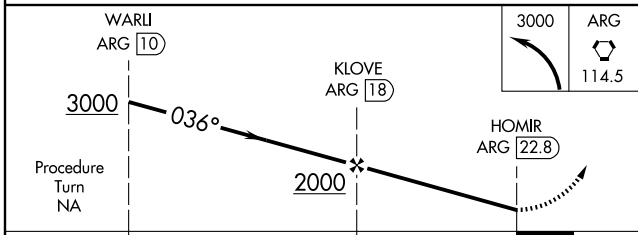
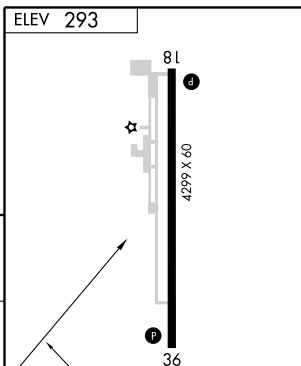
MEMPHIS CENTER  
**120.075 289.4**

UNICOM  
**123.0 (CTAF) ①**



IAF  
WALNUT RIDGE  
114.5 ARG  
Chan 92

NoPT for arrival on ARG VORTAC  
airway radials 149 CW 297.



CATEGORY	A	B	C	D
CIRCLING	1100-1 807 (900-1)	1100-1¼ 807 (900-1¼)	1100-2¼ 807 (900-2¼)	NA

REIL Rwy 18 and 36 ①  
MIRL Rwy 18-36 ①

SC-1, 22 OCT 2009 to 19 NOV 2009

SC-1, 22 OCT 2009 to 19 NOV 2009