

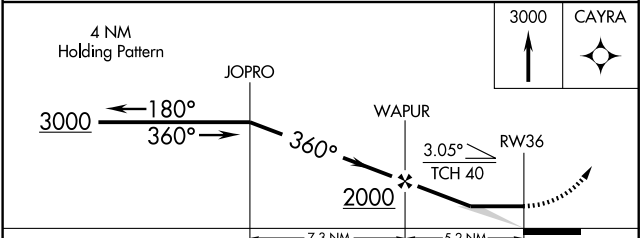
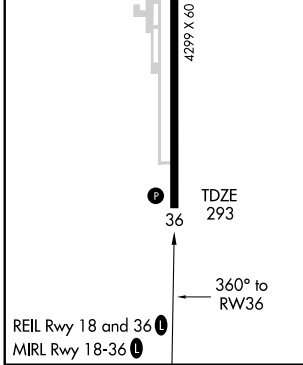
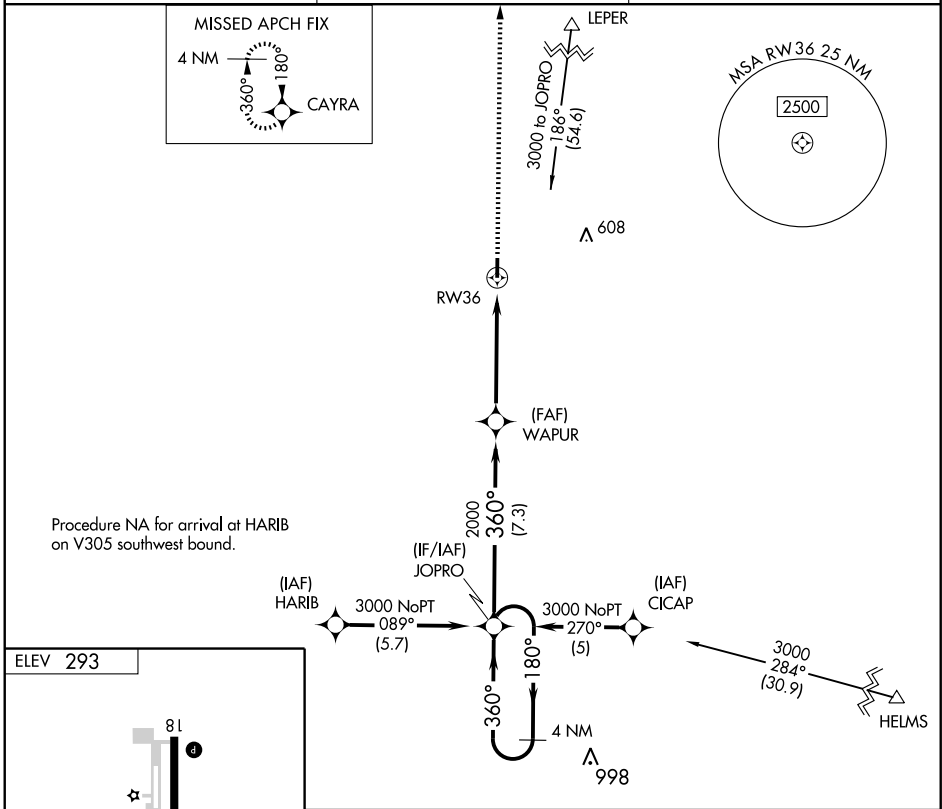
# RNAV (GPS) RWY 36

CORNING MUNI (4M9)

APP CRS	Rwy Idg	<b>4299</b>
<b>360°</b>	TDZE	<b>293</b>
	Apt Elev	<b>293</b>

**▲ NA** GPS or RNP-0.3 required. DME/DME RNP-0.3 NA. Use Walnut Ridge Rgnl altimeter setting. **MISSED APPROACH:** Climb to 3000 direct CAYRA WP and hold.

<b>AWOS-3</b> <b>118.325</b>	<b>MEMPHIS CENTER</b> <b>120.075 289.4</b>	<b>UNICOM</b> <b>123.0 (CTAF) ①</b>
---------------------------------	-----------------------------------------------	----------------------------------------



CATEGORY	A	B	C	D
LNAV MDA	700-1	407 (500-1)	700-1¼ 407 (500-1¼)	NA
CIRCLING	760-1	467 (500-1)	760-1½ 467 (500-1½)	NA

SC-1, 22 OCT 2009 to 19 NOV 2009

SC-1, 22 OCT 2009 to 19 NOV 2009