

BASSETT, NEBRASKA

AL-6572 (FAA)

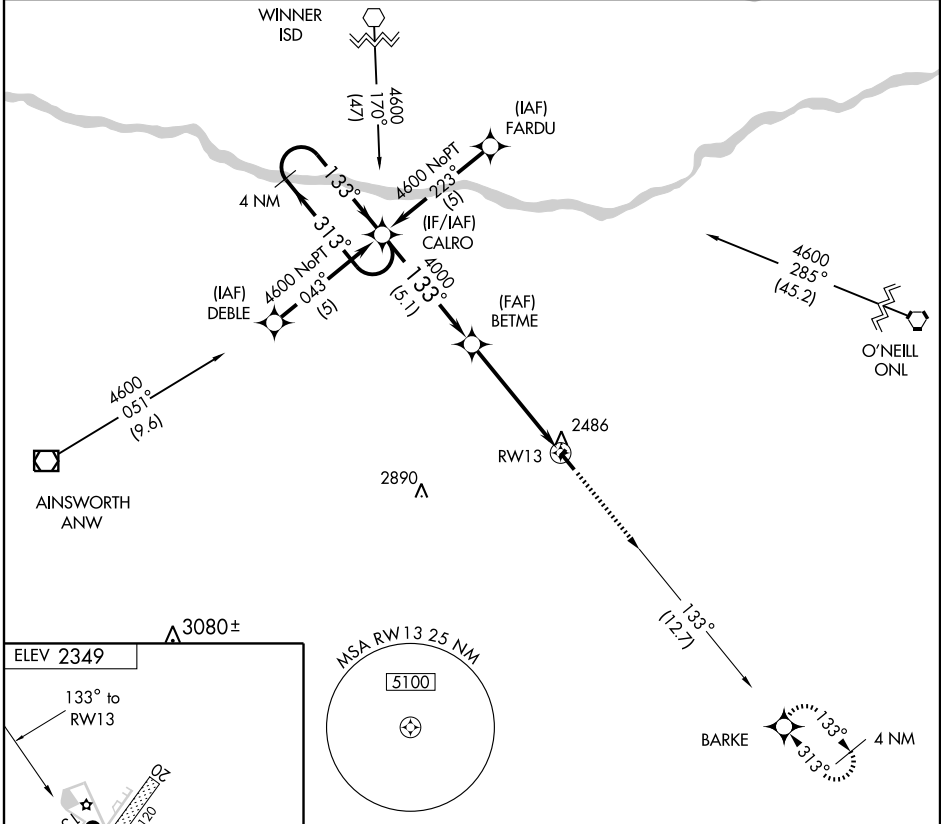
RNAV (GPS) RWY 13

BASSETT/ROCK COUNTY (R.B.E)

APP CRS 133°	Rwy Idg 4699
	TDZE 2348
	Apt Elev 2349

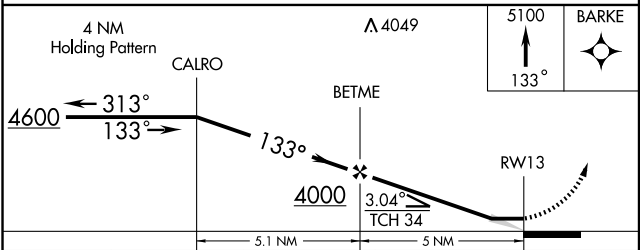
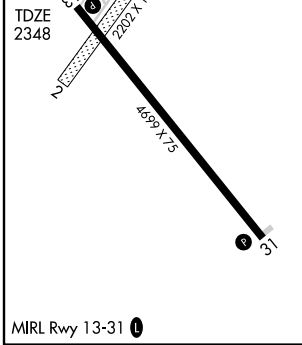
▼ Use Ainsworth altimeter setting.	MISSED APPROACH: Climb to 5100 via 133° course to BARKE and hold.
▲ NA GPS or RNP-0.3 REQUIRED. DME/DME RNP-0.3 NA	

DENVER CENTER 127.95 338.2	CTAF 122.9	122.8 0
--------------------------------------	----------------------	----------------



NC-2, 22 OCT 2009 to 19 NOV 2009

NC-2, 22 OCT 2009 to 19 NOV 2009



CATEGORY	A	B	C	D
LNAV MDA	2880-1	532 (600-1)	NA	NA
CIRCLING	2880-1	2900-1	551 (600-1)	NA

BASSETT, NEBRASKA
Orig 09127

42°34' N-99°34' W

RNAV (GPS) RWY 13