

BASSETT, NEBRASKA

AL-6572 (FAA)

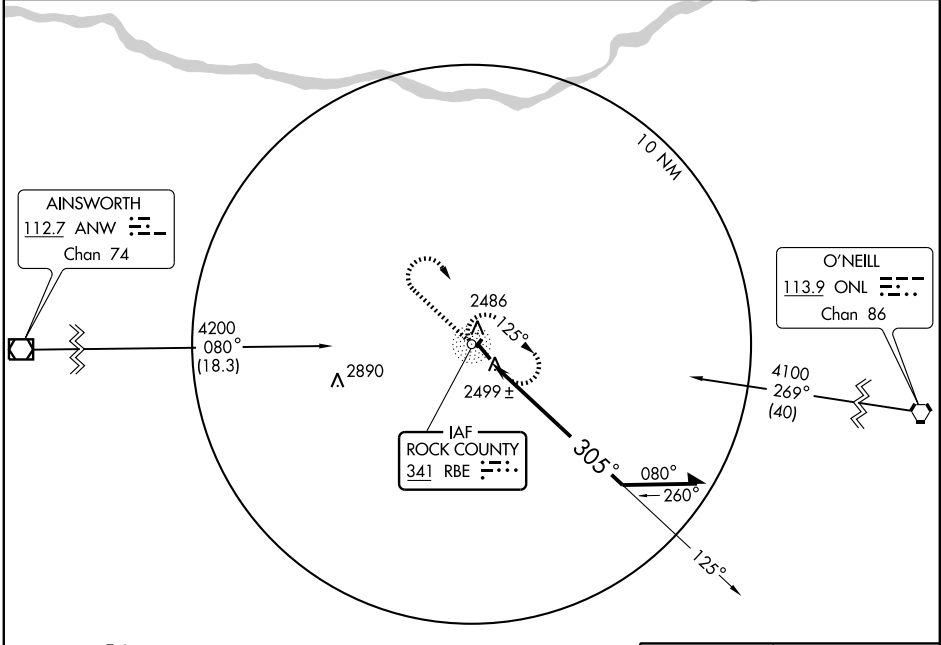
NDB RWY 31

BASSETT/ROCK COUNTY (RBE)

NDB RBE 341	APP CRS 305°	Rwy Idg 4699
		TDZE 2349
		Apt Elev 2349

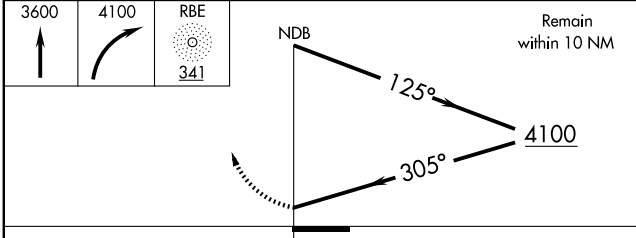
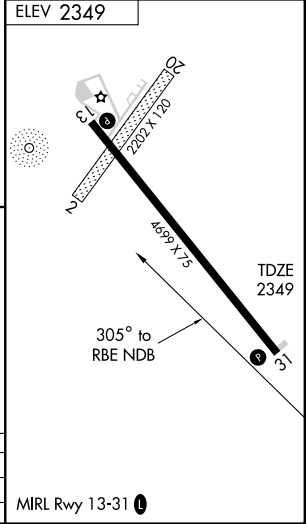
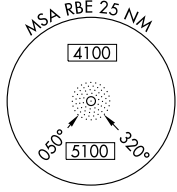
▼ Use Ainsworth altimeter setting.
▲ NA MISSED APPROACH: Climb to 3600, then climbing right turn to 4100 direct RBE NDB and hold.

DENVER CENTER 127.95 338.2	CTAF 122.9	122.8 0
--------------------------------------	----------------------	----------------



NC-2, 22 OCT 2009 to 19 NOV 2009

NC-2, 22 OCT 2009 to 19 NOV 2009



CATEGORY	A	B	C	D
5-31	3060-1	711 (800-1)		NA
CIRCLING	3060-1	711 (800-1)		NA

MIRL Rwy 13-31 0

BASSETT, NEBRASKA
Amdt 3 09127

42°34' N-99°34' W

BASSETT/ROCK COUNTY (RBE)
NDB RWY 31