

ROCK RAPIDS, IOWA

AL-6571 (FAA)

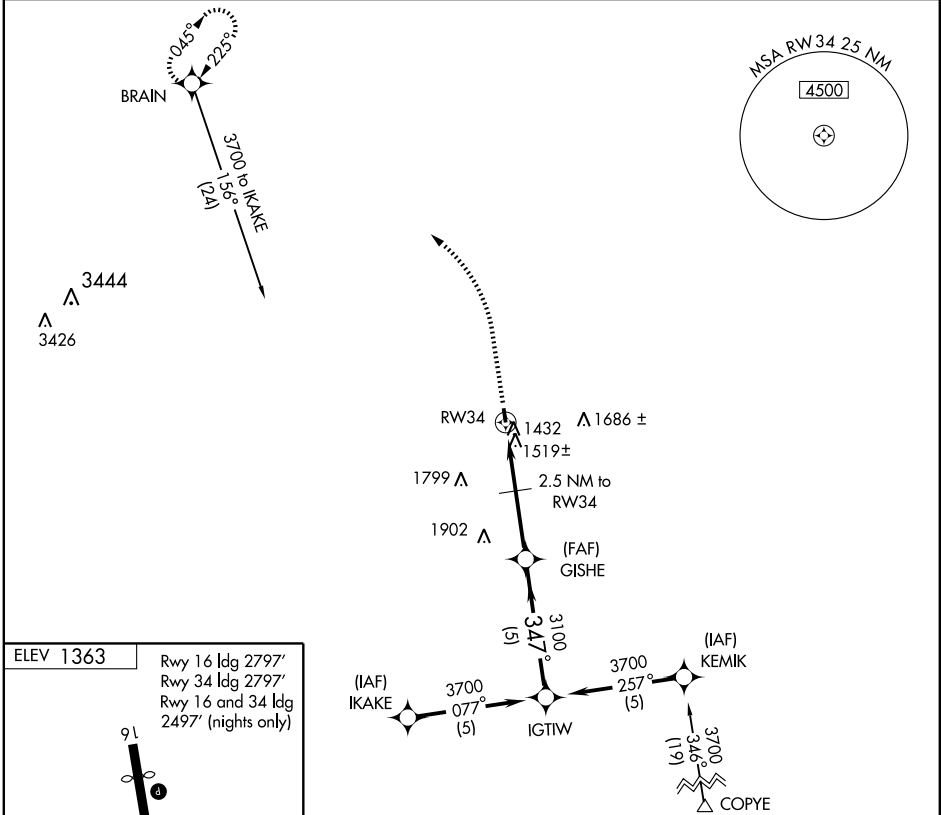
# GPS RWY 34

ROCK RAPIDS MUNI (R.R.Q)

APP CRS <b>347°</b>	Rwy ldg 2797* TDZE 1363 Apt Elev 1363
------------------------	--

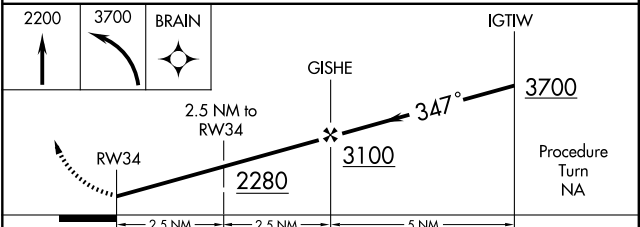
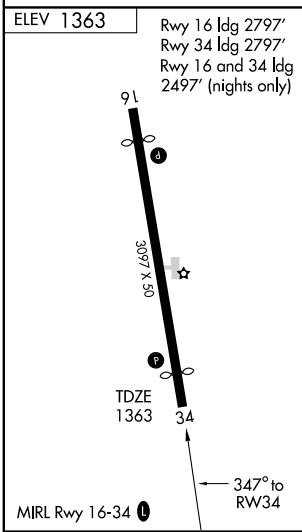
<b>▽</b> Use Sioux Falls, SD altimeter setting. <b>△ NA</b> * 2497' (nights only)	MISSED APPROACH: Climb to 2200, then climbing left turn to 3700 direct BRAIN WP and hold.
--	---

SIoux FALLS APP CON * <b>126.9 267.9</b>	UNICOM <b>122.8 (CTAF) 0</b>
---	---------------------------------



NC-3, 22 OCT 2009 to 19 NOV 2009

NC-3, 22 OCT 2009 to 19 NOV 2009



CATEGORY	A	B	C	D
S-34	1900-1	537 (600-1)		NA
CIRCLING	1960-1	597 (600-1)		NA

ROCK RAPIDS, IOWA  
Orig 03359

43°27'N-96°11'W

ROCK RAPIDS MUNI (R.R.Q)  
**GPS RWY 34**