

LEVELLAND, TEXAS

AL-6570 (FAA)

NDB RWY 17

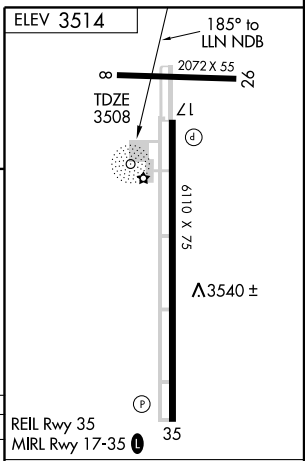
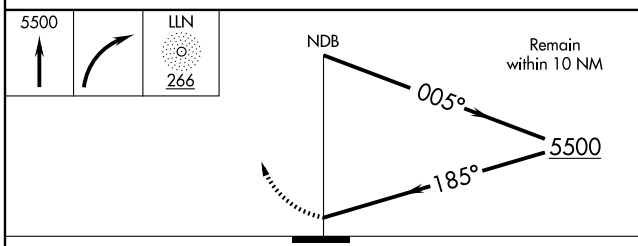
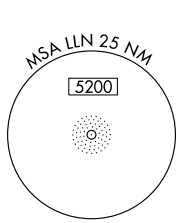
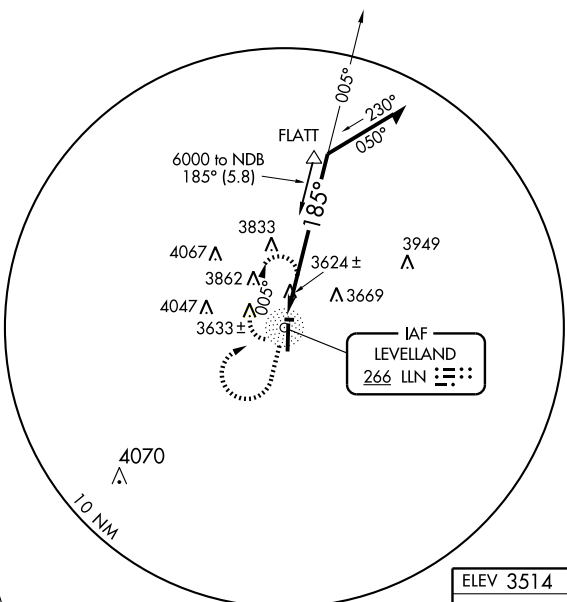
LEVELLAND MUNI (LLN)

NDB LLN 266	APP CRS 185°	Rwy Idg 6110 TDZE 3508 Apt Elev 3514
-----------------------	------------------------	---

Use Lubbock Preston Smith Intl altimeter setting. NA	MISSED APPROACH: Climb to 5500 then right turn direct LLN NDB and hold.
LUBBOCK APP CON 119.9 335.6	UNICOM 122.8 (CTAF) 0

SC-2, 22 OCT 2009 to 19 NOV 2009

SC-2, 22 OCT 2009 to 19 NOV 2009



CATEGORY	A	B	C	D
S-17	4360-1 852 (900-1)	4360-1¼ 852 (900-1¼)	4360-2½ 852 (900-2½)	4360-2¾ 852 (900-2¾)
CIRCLING	4360-1 846 (900-1)	4360-1¼ 846 (900-1¼)	4360-2½ 846 (900-2½)	4360-2¾ 846 (900-2¾)

REIL Rwy 35 MIRL Rwy 17-35 0	35				
Knots	60	90	120	150	180
Min:Sec					

LEVELLAND, TEXAS
Amdt 2B 07242

33°33'N-102°22'W

LEVELLAND MUNI (LLN) NDB RWY 17